



ELECTRONIC COPY

LG798601437
Report verification at igi.org



May 12, 2026

IGI Report Number **LG798601437**

Description **LABORATORY GROWN DIAMOND**

Shape and Cutting Style **EMERALD CUT**

Measurements **12.32 X 7.70 X 5.08 MM**

GRADING RESULTS

Carat Weight **5.02 CARATS**

Color Grade **FANCY INTENSE PINK**

Clarity Grade **VVS 2**

May 12, 2026
IGI Report Number **LG798601437**
Description **LABORATORY GROWN DIAMOND**
Shape and Cutting Style **EMERALD CUT**
Measurements **12.32 X 7.70 X 5.08 MM**

GRADING RESULTS

Carat Weight **5.02 CARATS**

Color Grade **FANCY INTENSE PINK**

Clarity Grade **VVS 2**

ADDITIONAL GRADING INFORMATION

Polish **VERY GOOD**

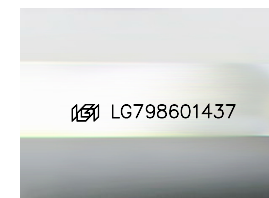
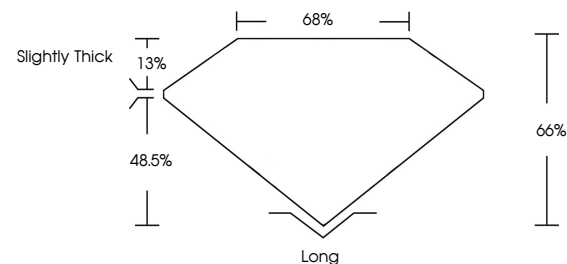
Symmetry **EXCELLENT**

Fluorescence **SLIGHT**

Inscription(s) **IGI LG798601437**

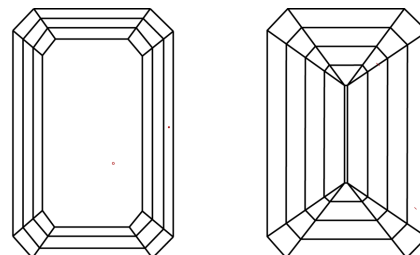
Comments: This Laboratory Grown Diamond was created by Chemical Vapor Deposition (CVD) growth process.
Indications of post-growth treatment.

PROPORTIONS



Sample Image Used

CLARITY CHARACTERISTICS



KEY TO SYMBOLS

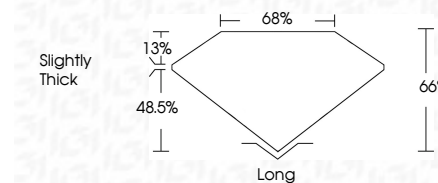
Red symbols indicate internal characteristics.
Green symbols indicate external characteristics.

COLOR

D E F G H I J Faint Very Light Light

CLARITY

FL	IF	VVS ¹⁻²	VS ¹⁻²	SI ¹⁻²	I ¹⁻³
Flawless	Internally Flawless	Very Very Slightly Included	Very Slightly Included	Slightly Included	Included



ADDITIONAL GRADING INFORMATION

Polish **VERY GOOD**

Symmetry **EXCELLENT**

Fluorescence **SLIGHT**

Inscription(s) **IGI LG798601437**

Comments: This Laboratory Grown Diamond was created by Chemical Vapor Deposition (CVD) growth process.
Indications of post-growth treatment.



IGI



May 12, 2026
IGI Report No LG798601437
EMERALD CUT
5.02 CARATS
FANCY INTENSE PINK
VVS 2
66%
68%
Slightly Thick
Long
VERY GOOD
EXCELLENT
SLIGHT
IGI LG798601437
Comments: This Laboratory Grown Diamond was created by Chemical Vapor Deposition (CVD) growth process.
Indications of post-growth treatment.