



ELECTRONIC COPY

LG798601407
Report verification at igi.org



May 7, 2026
IGI Report Number **LG798601407**
Description **LABORATORY GROWN DIAMOND**
Shape and Cutting Style **CUT CORNERED
RECTANGULAR MODIFIED
BRILLIANT**
Measurements **11.77 X 7.84 X 5.07 MM**
GRADING RESULTS
Carat Weight **4.07 CARATS**
Color Grade **FANCY VIVID PINK**
Clarity Grade **VVS 2**

May 7, 2026
IGI Report Number **LG798601407**
Description **LABORATORY GROWN DIAMOND**
Shape and Cutting Style **CUT CORNERED RECTANGULAR
MODIFIED BRILLIANT**
Measurements **11.77 X 7.84 X 5.07 MM**

GRADING RESULTS

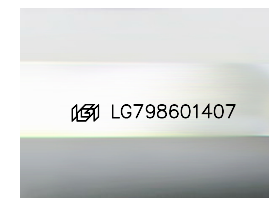
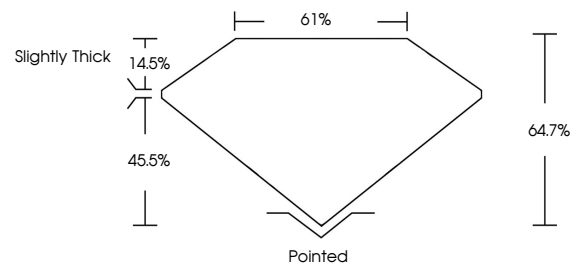
Carat Weight **4.07 CARATS**
Color Grade **FANCY VIVID PINK**
Clarity Grade **VVS 2**

ADDITIONAL GRADING INFORMATION

Polish **EXCELLENT**
Symmetry **EXCELLENT**
Fluorescence **SLIGHT**
Inscription(s) **IGI LG798601407**

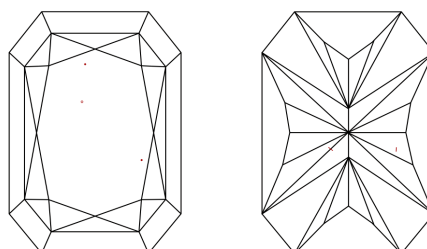
Comments: This Laboratory Grown Diamond was created by Chemical Vapor Deposition (CVD) growth process. Indications of post-growth treatment.

PROPORTIONS



Sample Image Used

CLARITY CHARACTERISTICS



KEY TO SYMBOLS

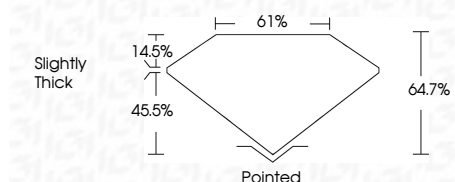
Red symbols indicate internal characteristics.
Green symbols indicate external characteristics.

COLOR

D E F G H I J Faint Very Light Light

CLARITY

FL	IF	VVS ¹⁻²	VS ¹⁻²	SI ¹⁻²	I ¹⁻³
Flawless	Internally Flawless	Very Very Slightly Included	Very Slightly Included	Slightly Included	Included



ADDITIONAL GRADING INFORMATION

Polish **EXCELLENT**
Symmetry **EXCELLENT**
Fluorescence **SLIGHT**
Inscription(s) **IGI LG798601407**
Comments: This Laboratory Grown Diamond was created by Chemical Vapor Deposition (CVD) growth process. Indications of post-growth treatment.



May 7, 2026
IGI Report No **LG798601407**
CUT CORNERED RECT. MODIFIED BRILLIANT
11.77 X 7.84 X 5.07 MM
4.07 CARATS
FANCY VIVID PINK
VVS 2
64.7%
61%
Slightly Thick
Pointed
EXCELLENT
EXCELLENT
SLIGHT
IGI LG798601407

Comments: This Laboratory Grown Diamond was created by Chemical Vapor Deposition (CVD) growth process. Indications of post-growth treatment.