



ELECTRONIC COPY

LG797699292
Report verification at igi.org



May 4, 2026

IGI Report Number **LG797699292**

Description **LABORATORY GROWN DIAMOND**

Shape and Cutting Style **EMERALD ROSE CUT**

Measurements **7.47 X 5.69 X 1.96 MM**

GRADING RESULTS

Carat Weight **1.13 CARAT**

Color Grade **E**

Clarity Grade **VS 1**

May 4, 2026

IGI Report Number **LG797699292**

Description **LABORATORY GROWN DIAMOND**

Shape and Cutting Style **EMERALD ROSE CUT**

Measurements **7.47 X 5.69 X 1.96 MM**

GRADING RESULTS

Carat Weight **1.13 CARAT**

Color Grade **E**

Clarity Grade **VS 1**

ADDITIONAL GRADING INFORMATION

Polish **EXCELLENT**

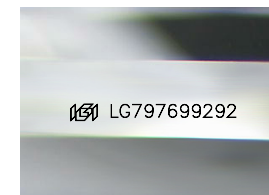
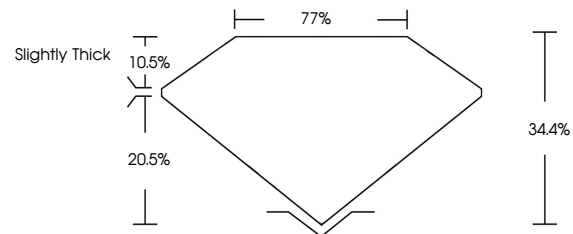
Symmetry **VERY GOOD**

Fluorescence **NONE**

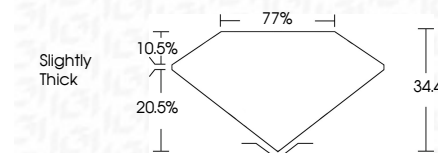
Inscription(s) **IGI LG797699292**

Comments: This Laboratory Grown Diamond was created by Chemical Vapor Deposition (CVD) growth process.
Type IIa

PROPORTIONS



Sample Image Used



COLOR

D E F G H I J Faint Very Light Light

CLARITY

FL	IF	VS ¹⁻²	VS ¹⁻²	SI ¹⁻²	I ¹⁻³
Flawless	Internally Flawless	Very Very Slightly Included	Very Slightly Included	Slightly Included	Included

ADDITIONAL GRADING INFORMATION

Polish **EXCELLENT**

Symmetry **VERY GOOD**

Fluorescence **NONE**

Inscription(s) **IGI LG797699292**

Comments: This Laboratory Grown Diamond was created by Chemical Vapor Deposition (CVD) growth process.
Type IIa



IGI



May 4, 2026
IGI Report No LG797699292
EMERALD ROSE CUT

7.47 X 5.69 X 1.96 MM

Carat Weight **1.13 CARAT**

Color Grade **E**

Clarity Grade **VS 1**

Table **77%**

Depth **34.4%**

Graile **Slightly Thick**

Culet **EXCELLENT**

Polish **VERY GOOD**

Symmetry **VERY GOOD**

Fluorescence **NONE**

Inscription(s) **IGI LG797699292**

Comments: This Laboratory Grown Diamond was created by Chemical Vapor Deposition (CVD) growth process.
Type IIa