



**ELECTRONIC COPY**

LG797699269  
Report verification at igi.org



May 8, 2026

IGI Report Number **LG797699269**

Description **LABORATORY GROWN DIAMOND**

Shape and Cutting Style **EMERALD CUT**

Measurements **7.05 X 5.06 X 3.25 MM**

**GRADING RESULTS**

Carat Weight **1.16 CARAT**

Color Grade **FANCY INTENSE PINK**

Clarity Grade **VS 1**

May 8, 2026

IGI Report Number **LG797699269**

Description **LABORATORY GROWN DIAMOND**

Shape and Cutting Style **EMERALD CUT**

Measurements **7.05 X 5.06 X 3.25 MM**

**GRADING RESULTS**

Carat Weight **1.16 CARAT**

Color Grade **FANCY INTENSE PINK**

Clarity Grade **VS 1**

**ADDITIONAL GRADING INFORMATION**

Polish **VERY GOOD**

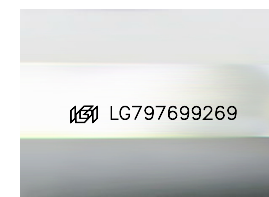
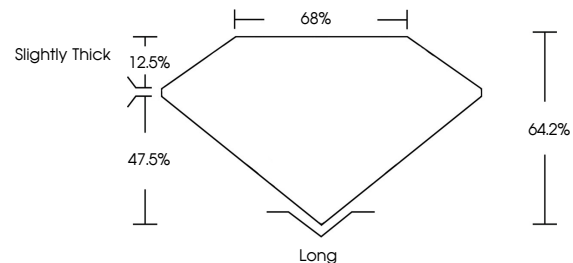
Symmetry **EXCELLENT**

Fluorescence **SLIGHT**

Inscription(s) **IGI LG797699269**

Comments: This Laboratory Grown Diamond was created by Chemical Vapor Deposition (CVD) growth process. Indications of post-growth treatment.

**PROPORTIONS**



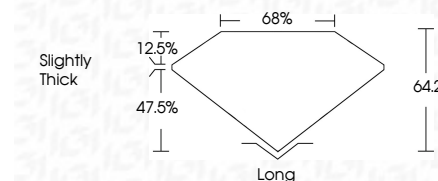
Sample Image Used

**COLOR**

D E F G H I J Faint Very Light Light

**CLARITY**

FL	IF	VS <sup>1-2</sup>	VS <sup>1-2</sup>	SI <sup>1-2</sup>	I <sup>1-3</sup>
Flawless	Internally Flawless	Very Very Slightly Included	Very Slightly Included	Slightly Included	Included



**ADDITIONAL GRADING INFORMATION**

Polish **VERY GOOD**

Symmetry **EXCELLENT**

Fluorescence **SLIGHT**

Inscription(s) **IGI LG797699269**

Comments: This Laboratory Grown Diamond was created by Chemical Vapor Deposition (CVD) growth process. Indications of post-growth treatment.



**IGI**



May 8, 2026  
IGI Report No LG797699269  
**EMERALD CUT**

**1.16 CARAT**  
Carat Weight  
**FANCY INTENSE PINK**  
Color Grade

**VS 1**  
Clarity Grade

**64.2%**  
Table

**47.5%**  
Depth

**Slightly Thick**  
Girdle

**Long**  
Culet

**VERY GOOD**  
Polish

**EXCELLENT**  
Symmetry

**SLIGHT**  
Fluorescence

**IGI LG797699269**  
Inscription(s)

Comments: This Laboratory Grown Diamond was created by Chemical Vapor Deposition (CVD) growth process. Indications of post-growth treatment.