



ELECTRONIC COPY

LG797696064
Report verification at igi.org



May 12, 2026
IGI Report Number **LG797696064**
Description **LABORATORY GROWN DIAMOND**
Shape and Cutting Style **CUSHION MODIFIED BRILLIANT**
Measurements **16.83 X 13.64 X 8.09 MM**
GRADING RESULTS
Carat Weight **18.05 CARATS**
Color Grade **FANCY VIVID ORANGY RED**
Clarity Grade **VS 2**

May 12, 2026
IGI Report Number **LG797696064**
Description **LABORATORY GROWN DIAMOND**
Shape and Cutting Style **CUSHION MODIFIED BRILLIANT**
Measurements **16.83 X 13.64 X 8.09 MM**

GRADING RESULTS

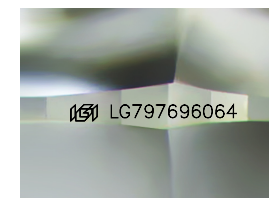
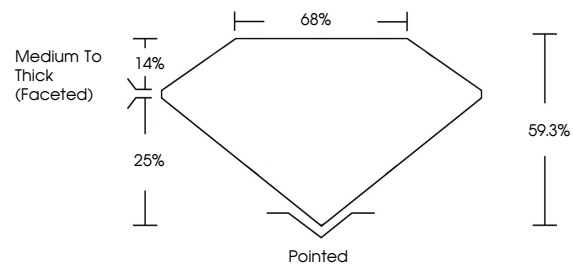
Carat Weight **18.05 CARATS**
Color Grade **FANCY VIVID ORANGY RED**
Clarity Grade **VS 2**

ADDITIONAL GRADING INFORMATION

Polish **EXCELLENT**
Symmetry **EXCELLENT**
Fluorescence **STRONG**
Inscription(s) **IGI LG797696064**

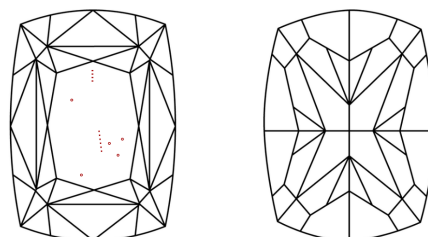
Comments: This Laboratory Grown Diamond was created by Chemical Vapor Deposition (CVD) growth process.
Indications of post-growth treatment.

PROPORTIONS



Sample Image Used

CLARITY CHARACTERISTICS



KEY TO SYMBOLS

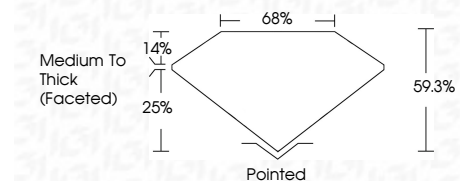
Red symbols indicate internal characteristics.
Green symbols indicate external characteristics.

COLOR

D E F G H I J Faint Very Light Light

CLARITY

FL	IF	VS ¹⁻²	VS ¹⁻²	SI ¹⁻²	I ¹⁻³
Flawless	Internally Flawless	Very Very Slightly Included	Very Slightly Included	Slightly Included	Included



ADDITIONAL GRADING INFORMATION

Polish **EXCELLENT**
Symmetry **EXCELLENT**
Fluorescence **STRONG**
Inscription(s) **IGI LG797696064**
Comments: This Laboratory Grown Diamond was created by Chemical Vapor Deposition (CVD) growth process.
Indications of post-growth treatment.



May 12, 2026
IGI Report No LG797696064
CUSHION MODIFIED BRILLIANT
18.05 CARATS
Carat Weight
Color Grade
FANCY VIVID ORANGY RED
VS 2
Clarity Grade
Measurements
16.83 X 13.64 X 8.09 MM
Table
Depth
Girdle
Medium To Thick (Faceted)
Culet
Pointed
Polish
Symmetry
EXCELLENT
Fluorescence
STRONG
Inscription(s)
IGI LG797696064

Comments: This Laboratory Grown Diamond was created by Chemical Vapor Deposition (CVD) growth process.
Indications of post-growth treatment.