



**ELECTRONIC COPY**

LG797695909  
Report verification at igi.org



May 8, 2026

IGI Report Number **LG797695909**

Description **LABORATORY GROWN DIAMOND**

Shape and Cutting Style **CUT CORNERED  
RECTANGULAR MODIFIED  
BRILLIANT**

Measurements **11.89 X 7.67 X 5.04 MM**

**GRADING RESULTS**

Carat Weight **4.20 CARATS**

Color Grade **F**

Clarity Grade **VVS 2**

May 8, 2026

IGI Report Number **LG797695909**

Description **LABORATORY GROWN DIAMOND**

Shape and Cutting Style **CUT CORNERED RECTANGULAR  
MODIFIED BRILLIANT**

Measurements **11.89 X 7.67 X 5.04 MM**

**GRADING RESULTS**

Carat Weight **4.20 CARATS**

Color Grade **F**

Clarity Grade **VVS 2**

**ADDITIONAL GRADING INFORMATION**

Polish **EXCELLENT**

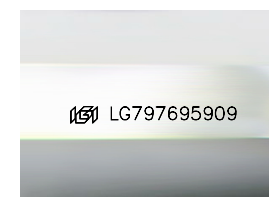
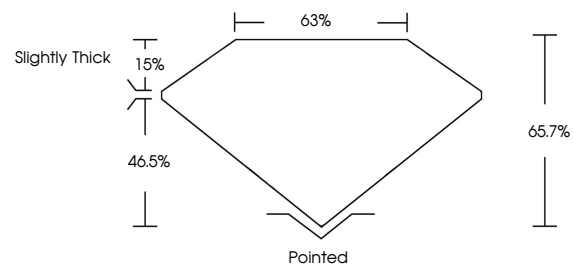
Symmetry **EXCELLENT**

Fluorescence **NONE**

Inscription(s) **IGI LG797695909**

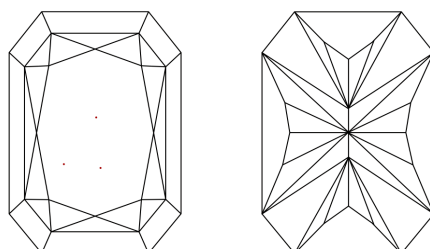
Comments: This Laboratory Grown Diamond was created by Chemical Vapor Deposition (CVD) growth process. Type IIa

**PROPORTIONS**



Sample Image Used

**CLARITY CHARACTERISTICS**



**KEY TO SYMBOLS**

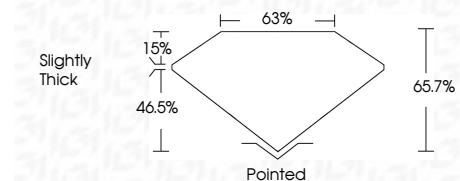
Red symbols indicate internal characteristics.  
Green symbols indicate external characteristics.

**COLOR**

D E F G H I J Faint Very Light Light

**CLARITY**

FL	IF	VVS <sup>1-2</sup>	VS <sup>1-2</sup>	SI <sup>1-2</sup>	I <sup>1-3</sup>
Flawless	Internally Flawless	Very Very Slightly Included	Very Slightly Included	Slightly Included	Included



**ADDITIONAL GRADING INFORMATION**

Polish **EXCELLENT**

Symmetry **EXCELLENT**

Fluorescence **NONE**

Inscription(s) **IGI LG797695909**

Comments: This Laboratory Grown Diamond was created by Chemical Vapor Deposition (CVD) growth process. Type IIa



**IGI**



May 8, 2026  
IGI Report No **LG797695909**  
**CUT CORNERED RECT. MODIFIED BRILLIANT**

**11.89 X 7.67 X 5.04 MM**

**4.20 CARATS**  
F

**VVS 2**  
65.7%  
63%

Slightly Thick

Pointed  
EXCELLENT  
EXCELLENT  
NONE  
IGI LG797695909

Comments: This Laboratory Grown Diamond was created by Chemical Vapor Deposition (CVD) growth process. Type IIa