



ELECTRONIC COPY

LABORATORY GROWN DIAMOND REPORT

May 5, 2026
IGI Report Number LG797695342
Description LABORATORY GROWN DIAMOND
Shape and Cutting Style EMERALD CUT
Measurements 8.09 X 5.47 X 3.82 MM

GRADING RESULTS

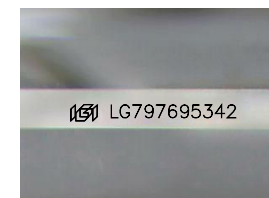
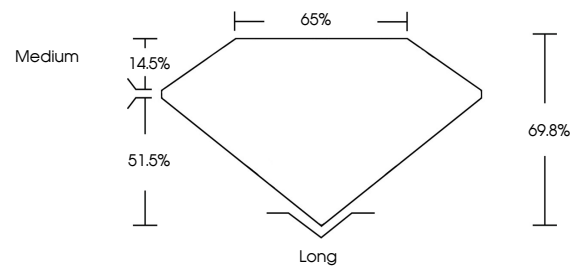
Carat Weight 1.65 CARAT
Color Grade E
Clarity Grade VS 1

ADDITIONAL GRADING INFORMATION

Polish EXCELLENT
Symmetry EXCELLENT
Fluorescence NONE
Inscription(s) IGI LG797695342

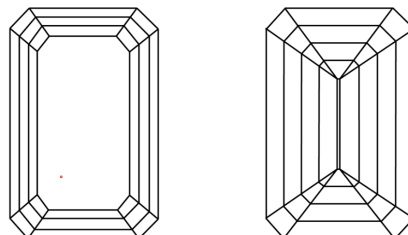
Comments: This Laboratory Grown Diamond was created by Chemical Vapor Deposition (CVD) growth process.
Type IIa

PROPORTIONS



Sample Image Used

CLARITY CHARACTERISTICS



KEY TO SYMBOLS

Red symbols indicate internal characteristics.
Green symbols indicate external characteristics.

COLOR

D E F G H I J Faint Very Light Light

CLARITY

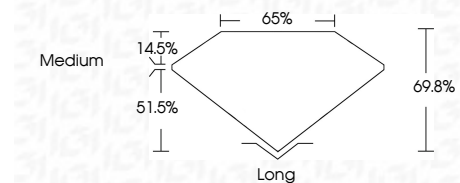
FL IF VS 1-2 VS 2-3 SI 1-2 I 1-3
Flawless Internally Flawless Very Very Slightly Included Very Slightly Included Slightly Included Included



May 5, 2026
IGI Report Number LG797695342
Description LABORATORY GROWN DIAMOND
Shape and Cutting Style EMERALD CUT
Measurements 8.09 X 5.47 X 3.82 MM

GRADING RESULTS

Carat Weight 1.65 CARAT
Color Grade E
Clarity Grade VS 1



ADDITIONAL GRADING INFORMATION

Polish EXCELLENT
Symmetry EXCELLENT
Fluorescence NONE
Inscription(s) IGI LG797695342
Comments: This Laboratory Grown Diamond was created by Chemical Vapor Deposition (CVD) growth process.
Type IIa



May 5, 2026
IGI Report No LG797695342
EMERALD CUT
8.09 X 5.47 X 3.82 MM
Carat Weight 1.65 CARAT
Color Grade E
Clarity Grade VS 1
Depth 69.8%
Table 65%
Girdle Medium
Culet Long
Polish EXCELLENT
Symmetry EXCELLENT
Fluorescence NONE
Inscription(s) IGI LG797695342
Comments: This Laboratory Grown Diamond was created by Chemical Vapor Deposition (CVD) growth process.
Type IIa