



ELECTRONIC COPY

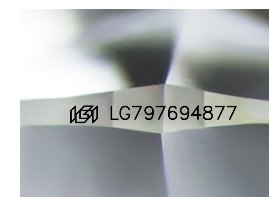
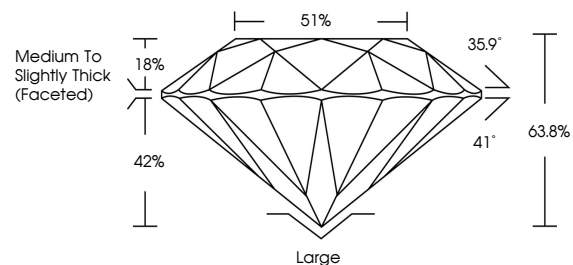
LG797694877
Report verification at igi.org



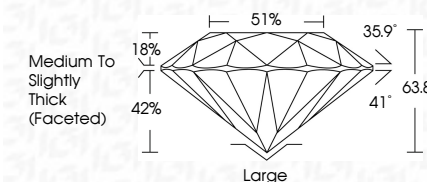
May 5, 2026
IGI Report Number **LG797694877**
Description **LABORATORY GROWN DIAMOND**
Shape and Cutting Style **OLD EUROPEAN CUT**
Measurements **9.21 - 9.24 X 5.89 MM**
GRADING RESULTS
Carat Weight **3.20 CARATS**
Color Grade **F**
Clarity Grade **VVS 2**

May 5, 2026
IGI Report Number **LG797694877**
Description **LABORATORY GROWN DIAMOND**
Shape and Cutting Style **OLD EUROPEAN CUT**
Measurements **9.21 - 9.24 X 5.89 MM**
GRADING RESULTS
Carat Weight **3.20 CARATS**
Color Grade **F**
Clarity Grade **VVS 2**

PROPORTIONS



Sample Image Used



ADDITIONAL GRADING INFORMATION

Polish **EXCELLENT**
Symmetry **EXCELLENT**
Fluorescence **NONE**
Inscription(s) **IGI LG797694877**

Comments: This Laboratory Grown Diamond was created by Chemical Vapor Deposition (CVD) growth process. Type IIa

ADDITIONAL GRADING INFORMATION

Polish **EXCELLENT**
Symmetry **EXCELLENT**
Fluorescence **NONE**
Inscription(s) **IGI LG797694877**
Comments: This Laboratory Grown Diamond was created by Chemical Vapor Deposition (CVD) growth process. Type IIa

COLOR

D E F G H I J Faint Very Light Light

CLARITY

FL	IF	VVS ¹⁻²	VS ¹⁻²	SI ¹⁻²	I ¹⁻³
Flawless	Internally Flawless	Very Very Slightly Included	Very Slightly Included	Slightly Included	Included



IGI



May 5, 2026
IGI Report No. **LG797694877**
OLD EUROPEAN CUT
9.21 - 9.24 X 5.89 MM
Carat Weight **3.20 CARATS**
Color Grade **F**
Clarity Grade **VVS 2**
Depth **63.8%**
Table **51%**
Girdle **Medium to Slightly Thick (Faceted)**
Culet **Large**
Polish **EXCELLENT**
Symmetry **EXCELLENT**
Fluorescence **NONE**
Inscription(s) **IGI LG797694877**

Comments: This Laboratory Grown Diamond was created by Chemical Vapor Deposition (CVD) growth process. Type IIa