



ELECTRONIC COPY

LG797694582
Report verification at igi.org



May 6, 2026

IGI Report Number **LG797694582**

Description **LABORATORY GROWN DIAMOND**

Shape and Cutting Style **ROUND BRILLIANT**

Measurements **6.55 - 6.58 X 4.00 MM**

GRADING RESULTS

Carat Weight **1.05 CARAT**

Color Grade **D**

Clarity Grade **VVS 2**

Cut Grade **IDEAL**

May 6, 2026

IGI Report Number **LG797694582**

Description **LABORATORY GROWN DIAMOND**

Shape and Cutting Style **ROUND BRILLIANT**

Measurements **6.55 - 6.58 X 4.00 MM**

GRADING RESULTS

Carat Weight **1.05 CARAT**

Color Grade **D**

Clarity Grade **VVS 2**

Cut Grade **IDEAL**

ADDITIONAL GRADING INFORMATION

Polish **EXCELLENT**

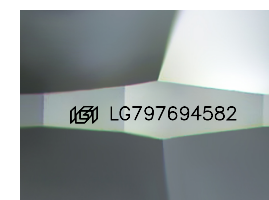
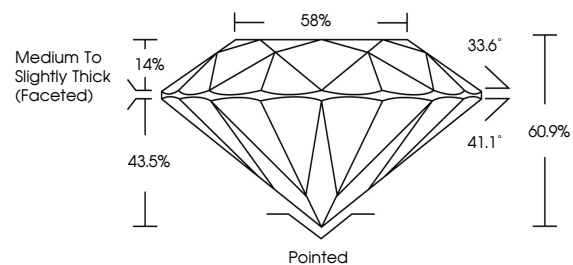
Symmetry **EXCELLENT**

Fluorescence **NONE**

Inscription(s) **IGI LG797694582**

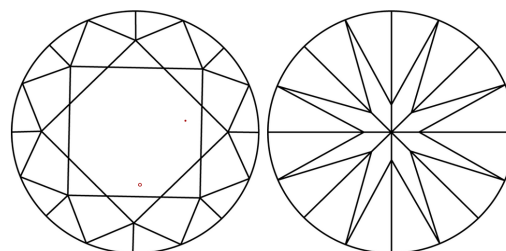
Comments: This Laboratory Grown Diamond was created by Chemical Vapor Deposition (CVD) growth process. Type IIa

PROPORTIONS



Sample Image Used

CLARITY CHARACTERISTICS



KEY TO SYMBOLS

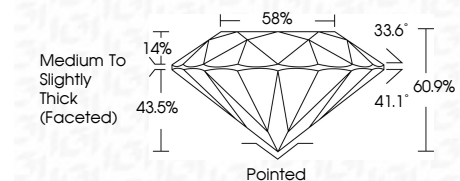
Red symbols indicate internal characteristics.
Green symbols indicate external characteristics.

COLOR

D E F G H I J Faint Very Light Light

CLARITY

FL	IF	VVS ¹⁻²	VS ¹⁻²	SI ¹⁻²	I ¹⁻³
Flawless	Internally Flawless	Very Very Slightly Included	Very Slightly Included	Slightly Included	Included



ADDITIONAL GRADING INFORMATION

Polish **EXCELLENT**

Symmetry **EXCELLENT**

Fluorescence **NONE**

Inscription(s) **IGI LG797694582**

Comments: This Laboratory Grown Diamond was created by Chemical Vapor Deposition (CVD) growth process. Type IIa



IGI



May 6, 2026	IGI Report No LG797694582	1.05 CARAT	D	Pointed	EXCELLENT	EXCELLENT	NONE	IGI LG797694582
ROUND BRILLIANT	6.55 - 6.58 X 4.00 MM	Color Grade	VVS 2	Depth	IDEAL	60.9%	58%	Medium To Slightly Thick (Faceted)
		Clarity Grade	VVS 2	Cut Grade	IDEAL	60.9%	58%	Pointed
		Table	14%	Depth	43.5%	60.9%	58%	EXCELLENT
		Grade	Medium To Slightly Thick (Faceted)					EXCELLENT
		Polish	EXCELLENT					EXCELLENT
		Symmetry	EXCELLENT					EXCELLENT
		Fluorescence	NONE					NONE
		Inscription(s)	IGI LG797694582					IGI LG797694582

Comments: This Laboratory Grown Diamond was created by Chemical Vapor Deposition (CVD) growth process. Type IIa