



**ELECTRONIC COPY**

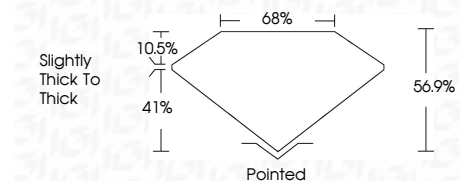
LG797693848  
Report verification at igi.org



May 4, 2026  
IGI Report Number **LG797693848**  
Description **LABORATORY GROWN DIAMOND**  
Shape and Cutting Style **LOZENGE STEP CUT**  
Measurements **9.98 X 7.59 X 4.32 MM**

**GRADING RESULTS**

Carat Weight **1.53 CARAT**  
Color Grade **E**  
Clarity Grade **VS 1**



**ADDITIONAL GRADING INFORMATION**

Polish **EXCELLENT**  
Symmetry **EXCELLENT**  
Fluorescence **NONE**  
Inscription(s) **IGI LG797693848**  
Comments: This Laboratory Grown Diamond was created by Chemical Vapor Deposition (CVD) growth process. Type IIa



May 4, 2026  
IGI Report No LG797693848  
**LOZENGE STEP CUT**  
9.98 X 7.59 X 4.32 MM  
1.53 CARAT  
E  
VS 1  
56.9%  
41%  
10.5%  
Slightly thick to thick  
Pointed  
EXCELLENT  
EXCELLENT  
NONE  
IGI LG797693848  
Comments: This Laboratory Grown Diamond was created by Chemical Vapor Deposition (CVD) growth process. Type IIa

**LABORATORY GROWN DIAMOND REPORT**

May 4, 2026  
IGI Report Number **LG797693848**  
Description **LABORATORY GROWN DIAMOND**  
Shape and Cutting Style **LOZENGE STEP CUT**  
Measurements **9.98 X 7.59 X 4.32 MM**

**GRADING RESULTS**

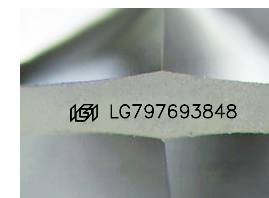
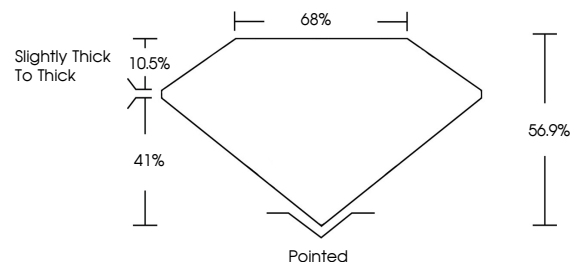
Carat Weight **1.53 CARAT**  
Color Grade **E**  
Clarity Grade **VS 1**

**ADDITIONAL GRADING INFORMATION**

Polish **EXCELLENT**  
Symmetry **EXCELLENT**  
Fluorescence **NONE**  
Inscription(s) **IGI LG797693848**

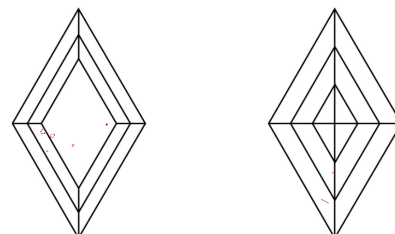
Comments: This Laboratory Grown Diamond was created by Chemical Vapor Deposition (CVD) growth process. Type IIa

**PROPORTIONS**



Sample Image Used

**CLARITY CHARACTERISTICS**



**KEY TO SYMBOLS**

Red symbols indicate internal characteristics.  
Green symbols indicate external characteristics.

**COLOR**

D E F G H I J Faint Very Light Light

**CLARITY**

FL	IF	VS <sup>1-2</sup>	VS <sup>1-2</sup>	SI <sup>1-2</sup>	I <sup>1-3</sup>
Flawless	Internally Flawless	Very Very Slightly Included	Very Slightly Included	Slightly Included	Included

