



ELECTRONIC COPY

LG797693524
Report verification at igi.org



May 8, 2026

IGI Report Number **LG797693524**

Description **LABORATORY GROWN DIAMOND**

Shape and Cutting Style **OVAL BRILLIANT**

Measurements **10.07 X 7.15 X 4.38 MM**

GRADING RESULTS

Carat Weight **2.07 CARATS**

Color Grade **FANCY VIVID BLUE**

Clarity Grade **VVS 2**

May 8, 2026
IGI Report Number **LG797693524**
Description **LABORATORY GROWN DIAMOND**
Shape and Cutting Style **OVAL BRILLIANT**
Measurements **10.07 X 7.15 X 4.38 MM**

GRADING RESULTS

Carat Weight **2.07 CARATS**

Color Grade **FANCY VIVID BLUE**

Clarity Grade **VVS 2**

ADDITIONAL GRADING INFORMATION

Polish **EXCELLENT**

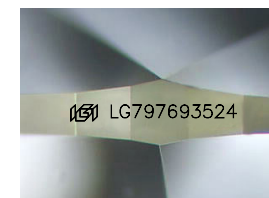
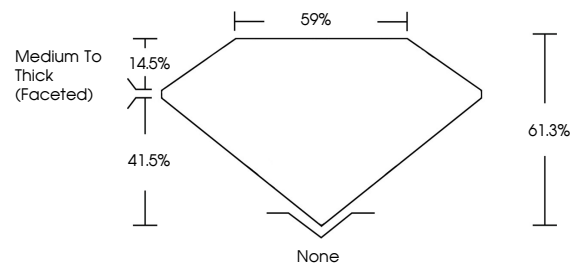
Symmetry **EXCELLENT**

Fluorescence **VERY SLIGHT**

Inscription(s) **IGI LG797693524**

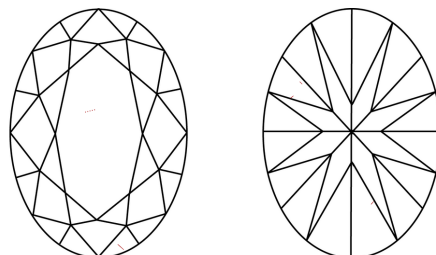
Comments: This Laboratory Grown Diamond was created by Chemical Vapor Deposition (CVD) growth process.
Indications of post-growth treatment.

PROPORTIONS



Sample Image Used

CLARITY CHARACTERISTICS



KEY TO SYMBOLS

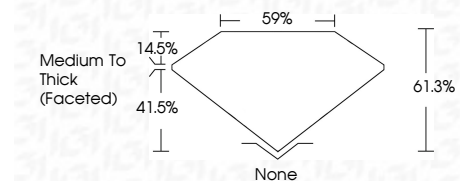
Red symbols indicate internal characteristics.
Green symbols indicate external characteristics.

COLOR

D E F G H I J Faint Very Light Light

CLARITY

FL	IF	VS ¹⁻²	VS ¹⁻²	SI ¹⁻²	I ¹⁻³
Flawless	Internally Flawless	Very Very Slightly Included	Very Slightly Included	Slightly Included	Included



ADDITIONAL GRADING INFORMATION

Polish **EXCELLENT**

Symmetry **EXCELLENT**

Fluorescence **VERY SLIGHT**

Inscription(s) **IGI LG797693524**

Comments: This Laboratory Grown Diamond was created by Chemical Vapor Deposition (CVD) growth process.
Indications of post-growth treatment.



IGI



May 8, 2026
IGI Report No LG797693524
OVAL BRILLIANT
2.07 CARATS
Carat Weight
Color Grade FANCY VIVID BLUE
Clarity Grade VVS 2
Depth 61.3%
Table 59%
Girdle Medium To Thick (Faceted)
Culet None
Polish EXCELLENT
Symmetry EXCELLENT
Fluorescence VERY SLIGHT
Inscription(s) IGI LG797693524

Comments: This Laboratory Grown Diamond was created by Chemical Vapor Deposition (CVD) growth process.
Indications of post-growth treatment.