



ELECTRONIC COPY

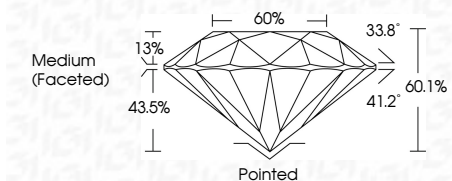
LG797693435 Report verification at igi.org



May 4, 2026 IGI Report Number LG797693435 Description LABORATORY GROWN DIAMOND Shape and Cutting Style ROUND BRILLIANT Measurements 7.08 - 7.11 X 4.27 MM

GRADING RESULTS

Carat Weight 1.31 CARAT Color Grade E Clarity Grade VS 2 Cut Grade IDEAL



ADDITIONAL GRADING INFORMATION

Polish EXCELLENT Symmetry EXCELLENT Fluorescence NONE Inscription(s) IGI LG797693435 Comments: This Laboratory Grown Diamond was created by Chemical Vapor Deposition (CVD) growth process. Type IIa



May 4, 2026 IGI Report No LG797693435 ROUND BRILLIANT 7.08 - 7.11 X 4.27 MM 1.31 CARAT E VS 2 IDEAL 60.1% 60% Medium (Faceted) Pointed EXCELLENT EXCELLENT NONE NONE IGI LG797693435 Comments: This Laboratory Grown Diamond was created by Chemical Vapor Deposition (CVD) growth process. Type IIa

May 4, 2026 IGI Report Number LG797693435 Description LABORATORY GROWN DIAMOND Shape and Cutting Style ROUND BRILLIANT Measurements 7.08 - 7.11 X 4.27 MM

GRADING RESULTS

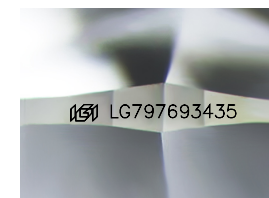
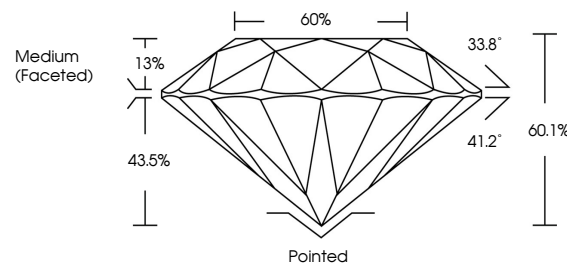
Carat Weight 1.31 CARAT Color Grade E Clarity Grade VS 2 Cut Grade IDEAL

ADDITIONAL GRADING INFORMATION

Polish EXCELLENT Symmetry EXCELLENT Fluorescence NONE Inscription(s) IGI LG797693435

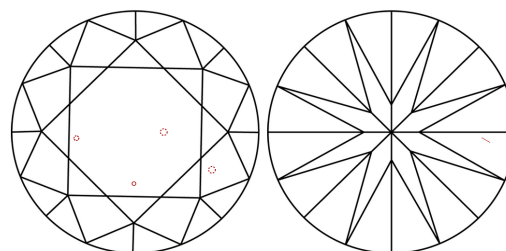
Comments: This Laboratory Grown Diamond was created by Chemical Vapor Deposition (CVD) growth process. Type IIa

PROPORTIONS



Sample Image Used

CLARITY CHARACTERISTICS



KEY TO SYMBOLS

Red symbols indicate internal characteristics. Green symbols indicate external characteristics.

COLOR

D E F G H I J Faint Very Light Light

CLARITY

FL IF VS 1-2 VS 1-2 SI 1-2 I 1-3 Flawless Internally Flawless Very Very Slightly Included Very Slightly Included Slightly Included Included

