



ELECTRONIC COPY

LG797692932
Report verification at igi.org



May 5, 2026

IGI Report Number LG797692932

Description LABORATORY GROWN DIAMOND

Shape and Cutting Style ROUND BRILLIANT

Measurements 6.50 - 6.53 X 4.09 MM

GRADING RESULTS

Carat Weight 1.05 CARAT

Color Grade E

Clarity Grade VS 1

Cut Grade EXCELLENT

May 5, 2026

IGI Report Number LG797692932

Description LABORATORY GROWN DIAMOND

Shape and Cutting Style ROUND BRILLIANT

Measurements 6.50 - 6.53 X 4.09 MM

GRADING RESULTS

Carat Weight 1.05 CARAT

Color Grade E

Clarity Grade VS 1

Cut Grade EXCELLENT

ADDITIONAL GRADING INFORMATION

Polish EXCELLENT

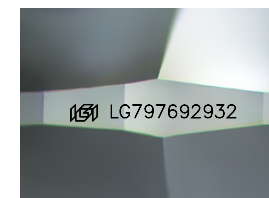
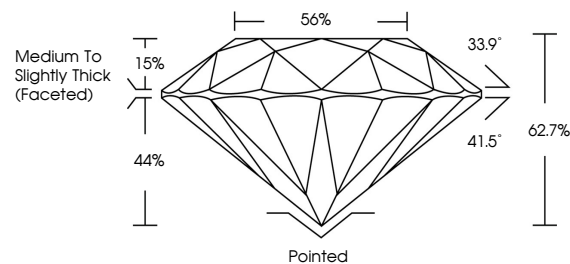
Symmetry EXCELLENT

Fluorescence NONE

Inscription(s) IGI LG797692932

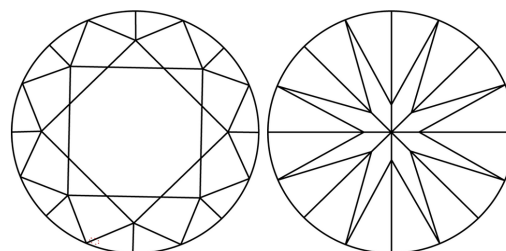
Comments: This Laboratory Grown Diamond was created by Chemical Vapor Deposition (CVD) growth process. Type IIa

PROPORTIONS



Sample Image Used

CLARITY CHARACTERISTICS



KEY TO SYMBOLS

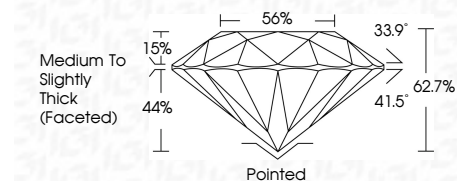
Red symbols indicate internal characteristics. Green symbols indicate external characteristics.

COLOR

D E F G H I J Faint Very Light Light

CLARITY

FL IF VS 1-2 VS 2-3 SI 1-2 I 1-3
Flawless Internally Flawless Very Very Slightly Included Very Slightly Included Slightly Included Included



ADDITIONAL GRADING INFORMATION

Polish EXCELLENT

Symmetry EXCELLENT

Fluorescence NONE

Inscription(s) IGI LG797692932

Comments: This Laboratory Grown Diamond was created by Chemical Vapor Deposition (CVD) growth process. Type IIa



Summary table of report details including date, report number, description, measurements, grading results, and additional information.