



ELECTRONIC COPY

LG797691112
Report verification at igi.org



May 6, 2026

IGI Report Number **LG797691112**

Description **LABORATORY GROWN DIAMOND**

Shape and Cutting Style **ROUND BRILLIANT**

Measurements **10.25 - 10.31 X 6.11 MM**

GRADING RESULTS

Carat Weight **4.02 CARATS**

Color Grade **F**

Clarity Grade **VVS 2**

Cut Grade **IDEAL**

May 6, 2026
IGI Report Number **LG797691112**
Description **LABORATORY GROWN DIAMOND**
Shape and Cutting Style **ROUND BRILLIANT**
Measurements **10.25 - 10.31 X 6.11 MM**

GRADING RESULTS

Carat Weight **4.02 CARATS**

Color Grade **F**

Clarity Grade **VVS 2**

Cut Grade **IDEAL**

ADDITIONAL GRADING INFORMATION

Polish **EXCELLENT**

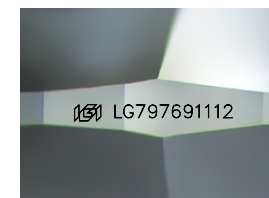
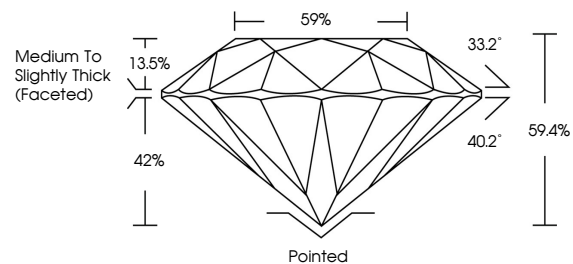
Symmetry **EXCELLENT**

Fluorescence **NONE**

Inscription(s) **IGI LG797691112**

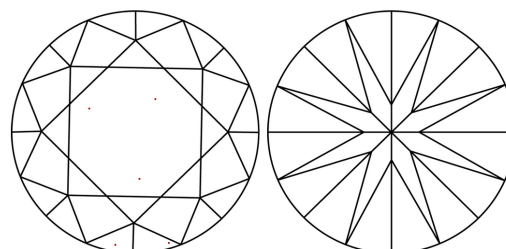
Comments: This Laboratory Grown Diamond was created by Chemical Vapor Deposition (CVD) growth process.
Type IIa

PROPORTIONS



Sample Image Used

CLARITY CHARACTERISTICS



KEY TO SYMBOLS

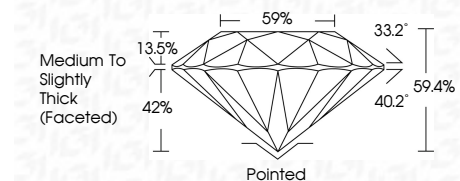
Red symbols indicate internal characteristics.
Green symbols indicate external characteristics.

COLOR

D E F G H I J Faint Very Light Light

CLARITY

| FL | IF | VVS ¹⁻² | VS ¹⁻² | SI ¹⁻² | I ¹⁻³ |
|----------|---------------------|-----------------------------|------------------------|-------------------|------------------|
| Flawless | Internally Flawless | Very Very Slightly Included | Very Slightly Included | Slightly Included | Included |



ADDITIONAL GRADING INFORMATION

Polish **EXCELLENT**

Symmetry **EXCELLENT**

Fluorescence **NONE**

Inscription(s) **IGI LG797691112**

Comments: This Laboratory Grown Diamond was created by Chemical Vapor Deposition (CVD) growth process.
Type IIa



IGI



| | | | | | | | | | | | | |
|-----------------|---------------------------|--------------|-------------|---------------|-----------|-------|------------------------------------|---------|-----------|-----------|--------------|-----------------|
| May 6, 2026 | IGI Report No LG797691112 | 4.02 CARATS | F | VVS 2 | IDEAL | 59.4% | Medium To Slightly Thick (Faceted) | Pointed | EXCELLENT | EXCELLENT | NONE | IGI LG797691112 |
| ROUND BRILLIANT | 10.25 - 10.31 X 6.11 MM | Carat Weight | Color Grade | Clarity Grade | Cut Grade | Depth | Table | Girdle | Polish | Symmetry | Fluorescence | Inscription(s) |

Comments: This Laboratory Grown Diamond was created by Chemical Vapor Deposition (CVD) growth process.
Type IIa