



ELECTRONIC COPY

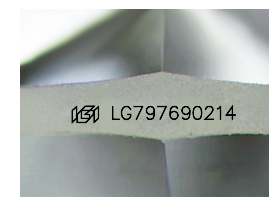
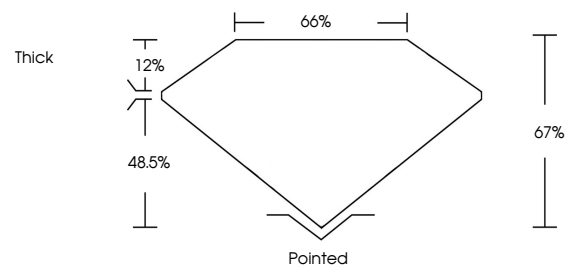
LG797690214
Report verification at igi.org



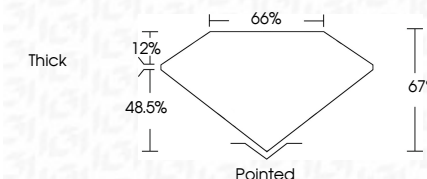
May 16, 2026
IGI Report Number **LG797690214**
Description **LABORATORY GROWN DIAMOND**
Shape and Cutting Style **HEXAGONAL MODIFIED BRILLIANT**
Measurements **11.06 X 5.51 X 3.69 MM**
GRADING RESULTS
Carat Weight **1.54 CARAT**
Color Grade **D**
Clarity Grade **VVS 2**

May 16, 2026
IGI Report Number **LG797690214**
Description **LABORATORY GROWN DIAMOND**
Shape and Cutting Style **HEXAGONAL MODIFIED BRILLIANT**
Measurements **11.06 X 5.51 X 3.69 MM**
GRADING RESULTS
Carat Weight **1.54 CARAT**
Color Grade **D**
Clarity Grade **VVS 2**

PROPORTIONS



Sample Image Used



ADDITIONAL GRADING INFORMATION

Polish **EXCELLENT**
Symmetry **EXCELLENT**
Fluorescence **NONE**
Inscription(s) **IGI LG797690214**

Comments: This Laboratory Grown Diamond was created by Chemical Vapor Deposition (CVD) growth process. Type IIa

ADDITIONAL GRADING INFORMATION

Polish **EXCELLENT**
Symmetry **EXCELLENT**
Fluorescence **NONE**
Inscription(s) **IGI LG797690214**
Comments: This Laboratory Grown Diamond was created by Chemical Vapor Deposition (CVD) growth process. Type IIa

COLOR

D E F G H I J Faint Very Light Light

CLARITY

FL	IF	VVS ¹⁻²	VS ¹⁻²	SI ¹⁻²	I ¹⁻³
Flawless	Internally Flawless	Very Very Slightly Included	Very Slightly Included	Slightly Included	Included



IGI



May 16, 2026
IGI Report No **LG797690214**
HEXAGONAL MODIFIED BRILLIANT
1.54 CARAT
D
VVS 2
67%
66%
Thick
Pointed
EXCELLENT
EXCELLENT
NONE
IGI LG797690214

Comments: This Laboratory Grown Diamond was created by Chemical Vapor Deposition (CVD) growth process. Type IIa