



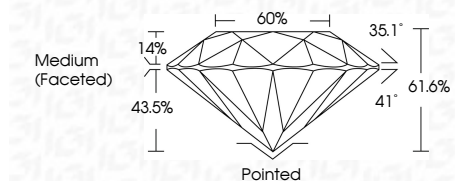
**ELECTRONIC COPY**

LG797690198  
Report verification at igi.org



May 15, 2026  
IGI Report Number **LG797690198**  
Description **LABORATORY GROWN DIAMOND**  
Shape and Cutting Style **ROUND BRILLIANT**  
Measurements **8.71 - 8.74 X 5.37 MM**

**GRADING RESULTS**  
Carat Weight **2.54 CARATS**  
Color Grade **D**  
Clarity Grade **VS 2**  
Cut Grade **IDEAL**



**ADDITIONAL GRADING INFORMATION**  
Polish **EXCELLENT**  
Symmetry **EXCELLENT**  
Fluorescence **NONE**  
Inscription(s) **IGI LG797690198**  
Comments: This Laboratory Grown Diamond was created by Chemical Vapor Deposition (CVD) growth process. Type IIa

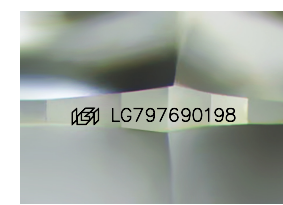
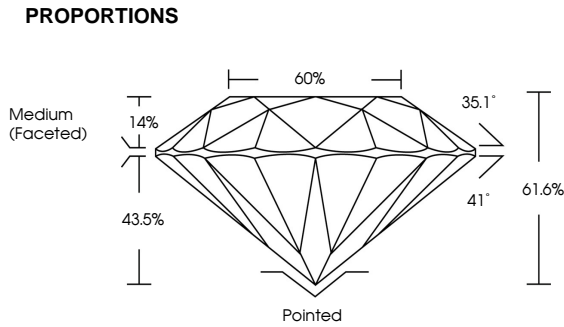


May 15, 2026  
IGI Report No LG797690198  
**ROUND BRILLIANT**  
8.71 - 8.74 X 5.37 MM  
2.54 CARATS  
Color Grade **D**  
Clarity Grade **VS 2**  
Cut Grade **IDEAL**  
Depth **43.5%**  
Table **14%**  
Girdle **61.6%**  
Medium (Faceted)  
Culet **Pointed**  
Polish **EXCELLENT**  
Symmetry **EXCELLENT**  
Fluorescence **NONE**  
Inscription(s) **IGI LG797690198**  
Comments: This Laboratory Grown Diamond was created by Chemical Vapor Deposition (CVD) growth process. Type IIa

May 15, 2026  
IGI Report Number **LG797690198**  
Description **LABORATORY GROWN DIAMOND**  
Shape and Cutting Style **ROUND BRILLIANT**  
Measurements **8.71 - 8.74 X 5.37 MM**  
**GRADING RESULTS**  
Carat Weight **2.54 CARATS**  
Color Grade **D**  
Clarity Grade **VS 2**  
Cut Grade **IDEAL**

**ADDITIONAL GRADING INFORMATION**  
Polish **EXCELLENT**  
Symmetry **EXCELLENT**  
Fluorescence **NONE**  
Inscription(s) **IGI LG797690198**

Comments: This Laboratory Grown Diamond was created by Chemical Vapor Deposition (CVD) growth process. Type IIa



Sample Image Used

**COLOR**

D	E	F	G	H	I	J	Faint	Very Light	Light
---	---	---	---	---	---	---	-------	------------	-------

**CLARITY**

FL	IF	VS <sup>1-2</sup>	VS <sup>1-2</sup>	SI <sup>1-2</sup>	I <sup>1-3</sup>
Flawless	Internally Flawless	Very Very Slightly Included	Very Slightly Included	Slightly Included	Included

