



ELECTRONIC COPY

LG797690099
Report verification at igi.org



May 18, 2026

IGI Report Number **LG797690099**

Description **LABORATORY GROWN DIAMOND**

Shape and Cutting Style **MARQUISE BRILLIANT**

Measurements **12.86 X 6.40 X 3.79 MM**

GRADING RESULTS

Carat Weight **1.77 CARAT**

Color Grade **E**

Clarity Grade **VS 1**

May 18, 2026

IGI Report Number **LG797690099**

Description **LABORATORY GROWN DIAMOND**

Shape and Cutting Style **MARQUISE BRILLIANT**

Measurements **12.86 X 6.40 X 3.79 MM**

GRADING RESULTS

Carat Weight **1.77 CARAT**

Color Grade **E**

Clarity Grade **VS 1**

ADDITIONAL GRADING INFORMATION

Polish **EXCELLENT**

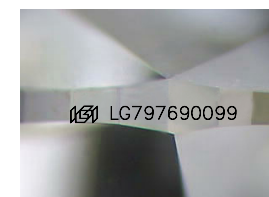
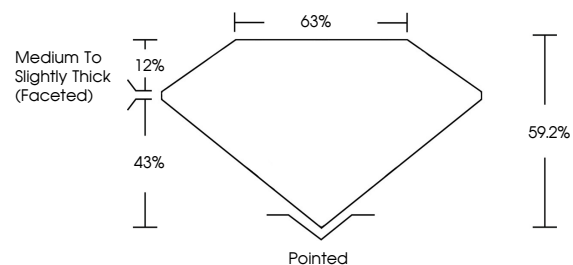
Symmetry **EXCELLENT**

Fluorescence **NONE**

Inscription(s) **IGI LG797690099**

Comments: This Laboratory Grown Diamond was created by Chemical Vapor Deposition (CVD) growth process.
Type IIa

PROPORTIONS



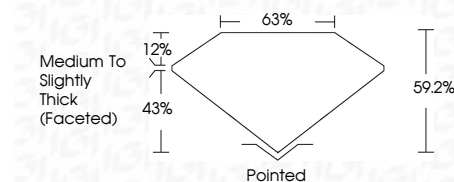
Sample Image Used

COLOR

D E F G H I J Faint Very Light Light

CLARITY

FL	IF	VS ¹⁻²	VS ¹⁻²	SI ¹⁻²	I ¹⁻³
Flawless	Internally Flawless	Very Very Slightly Included	Very Slightly Included	Slightly Included	Included



ADDITIONAL GRADING INFORMATION

Polish **EXCELLENT**

Symmetry **EXCELLENT**

Fluorescence **NONE**

Inscription(s) **IGI LG797690099**

Comments: This Laboratory Grown Diamond was created by Chemical Vapor Deposition (CVD) growth process.
Type IIa



IGI



May 18, 2026
IGI Report No LG797690099
MARQUISE BRILLIANT

12.86 X 6.40 X 3.79 MM
1.77 CARAT
E
VS 1
63%
43%
Medium to Slightly Thick (Faceted)

Pointed
EXCELLENT
EXCELLENT
NONE
IGI LG797690099

Comments: This Laboratory Grown Diamond was created by Chemical Vapor Deposition (CVD) growth process.
Type IIa