



**ELECTRONIC COPY**

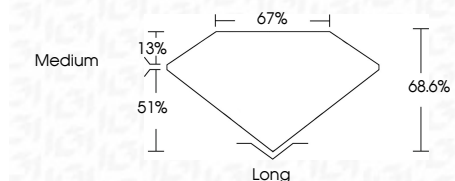
LG797689410  
Report verification at igi.org



May 8, 2026  
IGI Report Number **LG797689410**  
Description **LABORATORY GROWN DIAMOND**  
Shape and Cutting Style **EMERALD CUT**  
Measurements **9.82 X 6.81 X 4.67 MM**

**GRADING RESULTS**

Carat Weight **3.07 CARATS**  
Color Grade **F**  
Clarity Grade **VVS 2**



**ADDITIONAL GRADING INFORMATION**

Polish **EXCELLENT**  
Symmetry **EXCELLENT**  
Fluorescence **NONE**  
Inscription(s) **IGI LG797689410**  
Comments: This Laboratory Grown Diamond was created by Chemical Vapor Deposition (CVD) growth process. Type IIa



May 8, 2026  
IGI Report No LG797689410  
**EMERALD CUT**  
3.07 CARATS  
F  
9.82 X 6.81 X 4.67 MM  
Color Grade  
VVS 2  
68.6%  
51%  
67%  
Medium  
Long  
EXCELLENT  
EXCELLENT  
NONE  
IGI LG797689410  
Comments: This Laboratory Grown Diamond was created by Chemical Vapor Deposition (CVD) growth process. Type IIa

**LABORATORY GROWN DIAMOND REPORT**

May 8, 2026  
IGI Report Number **LG797689410**  
Description **LABORATORY GROWN DIAMOND**  
Shape and Cutting Style **EMERALD CUT**  
Measurements **9.82 X 6.81 X 4.67 MM**

**GRADING RESULTS**

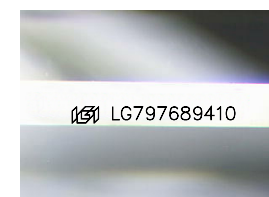
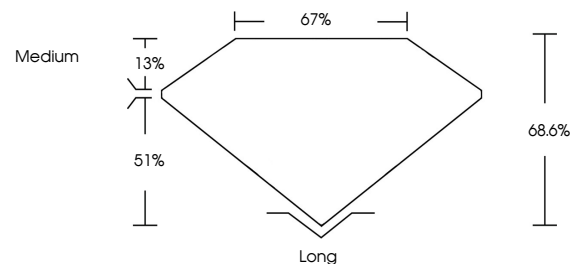
Carat Weight **3.07 CARATS**  
Color Grade **F**  
Clarity Grade **VVS 2**

**ADDITIONAL GRADING INFORMATION**

Polish **EXCELLENT**  
Symmetry **EXCELLENT**  
Fluorescence **NONE**  
Inscription(s) **IGI LG797689410**

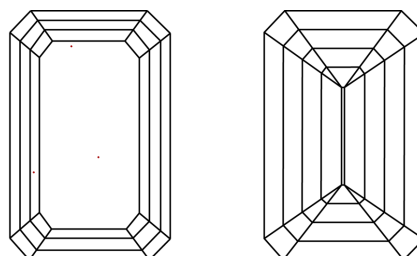
Comments: This Laboratory Grown Diamond was created by Chemical Vapor Deposition (CVD) growth process. Type IIa

**PROPORTIONS**



Sample Image Used

**CLARITY CHARACTERISTICS**



**KEY TO SYMBOLS**

Red symbols indicate internal characteristics.  
Green symbols indicate external characteristics.

**COLOR**

D E F G H I J Faint Very Light Light

**CLARITY**

FL	IF	VVS <sup>1-2</sup>	VS <sup>1-2</sup>	SI <sup>1-2</sup>	I <sup>1-3</sup>
Flawless	Internally Flawless	Very Very Slightly Included	Very Slightly Included	Slightly Included	Included

