



ELECTRONIC COPY

LG797689131
Report verification at igi.org



May 12, 2026

IGI Report Number **LG797689131**

Description **LABORATORY GROWN DIAMOND**

Shape and Cutting Style **ROUND BRILLIANT**

Measurements **6.46 - 6.50 X 4.00 MM**

GRADING RESULTS

Carat Weight **1.05 CARAT**

Color Grade **E**

Clarity Grade **VVS 2**

Cut Grade **IDEAL**

May 12, 2026

IGI Report Number **LG797689131**

Description **LABORATORY GROWN DIAMOND**

Shape and Cutting Style **ROUND BRILLIANT**

Measurements **6.46 - 6.50 X 4.00 MM**

GRADING RESULTS

Carat Weight **1.05 CARAT**

Color Grade **E**

Clarity Grade **VVS 2**

Cut Grade **IDEAL**

ADDITIONAL GRADING INFORMATION

Polish **EXCELLENT**

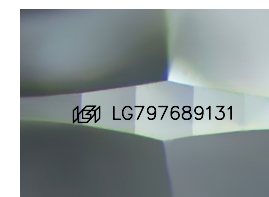
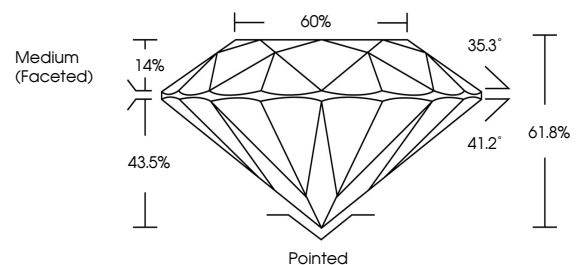
Symmetry **EXCELLENT**

Fluorescence **NONE**

Inscription(s) **IGI LG797689131**

Comments: This Laboratory Grown Diamond was created by Chemical Vapor Deposition (CVD) growth process. Type IIa

PROPORTIONS



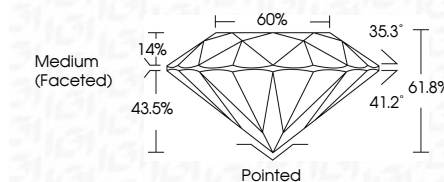
Sample Image Used

COLOR

D E F G H I J Faint Very Light Light

CLARITY

FL	IF	VS ¹⁻²	VS ¹⁻²	SI ¹⁻²	I ¹⁻³
Flawless	Internally Flawless	Very Very Slightly Included	Very Slightly Included	Slightly Included	Included



ADDITIONAL GRADING INFORMATION

Polish **EXCELLENT**

Symmetry **EXCELLENT**

Fluorescence **NONE**

Inscription(s) **IGI LG797689131**

Comments: This Laboratory Grown Diamond was created by Chemical Vapor Deposition (CVD) growth process. Type IIa



May 12, 2026	IGI Report No LG797689131	1.05 CARAT	E	Pointed	EXCELLENT	EXCELLENT	NONE	IGI LG797689131
ROUND BRILLIANT	6.46 - 6.50 X 4.00 MM	Color Grade	VVS 2	Depth	IDEAL	61.8%	60%	Medium (Faceted)
		Carat Weight	Clarity Grade	Table	61.8%	60%		
		Color Grade	Cut Grade	Girdle				
		Clarity Grade	Cut Grade					
		Depth						
		Table						
		Girdle						
		Culet						
		Polish						
		Symmetry						
		Fluorescence						
		Inscription(s)						

Comments: This Laboratory Grown Diamond was created by Chemical Vapor Deposition (CVD) growth process. Type IIa