



ELECTRONIC COPY

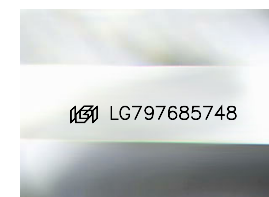
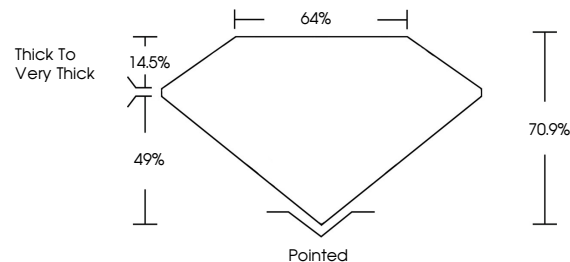
LG797685748
Report verification at igi.org



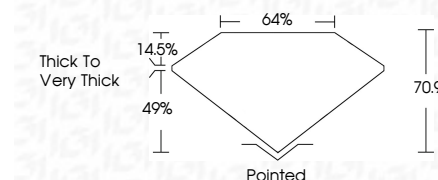
May 9, 2026
IGI Report Number **LG797685748**
Description **LABORATORY GROWN DIAMOND**
Shape and Cutting Style **CUT CORNERED
RECTANGULAR MODIFIED
BRILLIANT**
Measurements **9.86 X 6.50 X 4.61 MM**
GRADING RESULTS
Carat Weight **3.03 CARATS**
Color Grade **FANCY DEEP BROWN**
Clarity Grade **VS 1**

May 9, 2026
IGI Report Number **LG797685748**
Description **LABORATORY GROWN DIAMOND**
Shape and Cutting Style **CUT CORNERED RECTANGULAR
MODIFIED BRILLIANT**
Measurements **9.86 X 6.50 X 4.61 MM**
GRADING RESULTS
Carat Weight **3.03 CARATS**
Color Grade **FANCY DEEP BROWN**
Clarity Grade **VS 1**

PROPORTIONS



Sample Image Used



ADDITIONAL GRADING INFORMATION

Polish **VERY GOOD**
Symmetry **EXCELLENT**
Fluorescence **VERY SLIGHT**
Inscription(s) **IGI LG797685748**

Comments: This Laboratory Grown Diamond was created by Chemical Vapor Deposition (CVD) growth process. Indications of post-growth treatment.

COLOR

D E F G H I J Faint Very Light Light

CLARITY

FL	IF	VS ¹⁻²	VS ¹⁻²	SI ¹⁻²	I ¹⁻³
Flawless	Internally Flawless	Very Very Slightly Included	Very Slightly Included	Slightly Included	Included

ADDITIONAL GRADING INFORMATION

Polish **VERY GOOD**
Symmetry **EXCELLENT**
Fluorescence **VERY SLIGHT**
Inscription(s) **IGI LG797685748**
Comments: This Laboratory Grown Diamond was created by Chemical Vapor Deposition (CVD) growth process. Indications of post-growth treatment.



IGI

May 9, 2026
IGI Report No **LG797685748**
CUT CORNERED RECT. MODIFIED BRILLIANT
9.86 X 6.50 X 4.61 MM
Carat Weight **3.03 CARATS**
Color Grade **FANCY DEEP BROWN**
Clarity Grade **VS 1**
Depth **70.9%**
Table **64%**
Girdle **Thick to Very Thick**
Culet **Pointed**
Polish **VERY GOOD**
Symmetry **EXCELLENT**
Fluorescence **VERY SLIGHT**
Inscription(s) **IGI LG797685748**

Comments: This Laboratory Grown Diamond was created by Chemical Vapor Deposition (CVD) growth process. Indications of post-growth treatment.