



ELECTRONIC COPY

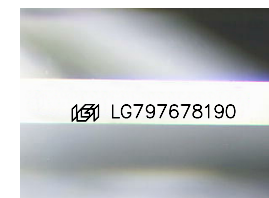
LG797678190
Report verification at igi.org



May 27, 2026
IGI Report Number **LG797678190**
Description **LABORATORY GROWN DIAMOND**

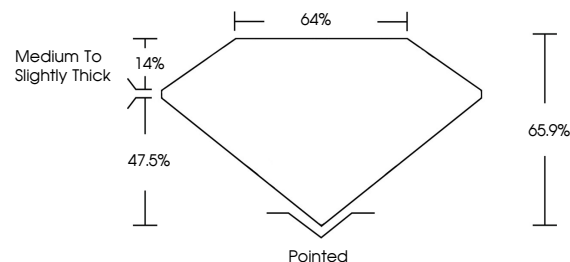
Shape and Cutting Style **SQUARE EMERALD CUT**
Measurements **6.94 X 6.94 X 4.57 MM**

GRADING RESULTS
Carat Weight **2.07 CARATS**
Color Grade **D**
Clarity Grade **VVS 1**

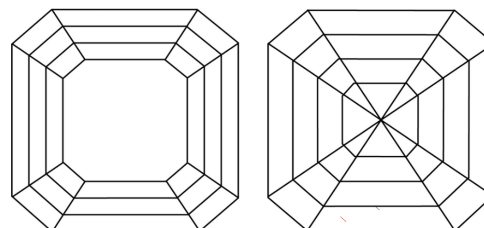


Sample Image Used

PROPORTIONS



CLARITY CHARACTERISTICS



KEY TO SYMBOLS

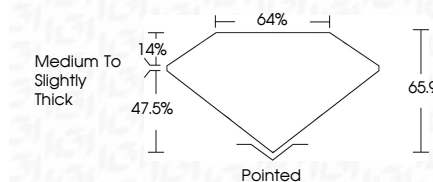
Red symbols indicate internal characteristics.
Green symbols indicate external characteristics.

COLOR

D E F G H I J Faint Very Light Light

CLARITY

FL	IF	VVS ¹⁻²	VS ¹⁻²	SI ¹⁻²	I ¹⁻³
Flawless	Internally Flawless	Very Very Slightly Included	Very Slightly Included	Slightly Included	Included



ADDITIONAL GRADING INFORMATION

Polish **EXCELLENT**
Symmetry **EXCELLENT**
Fluorescence **NONE**
Inscription(s) **IGI LG797678190**
Comments: As Grown - No indication of post-growth treatment.
This Laboratory Grown Diamond was created by High Pressure High Temperature (HPHT) growth process.
Type II



IGI



May 27, 2026
IGI Report No LG797678190
SQUARE EMERALD CUT
6.94 X 6.94 X 4.57 MM
2.07 CARATS
D
VVS 1
65.9%
47.5%
14%
Medium to Slightly Thick
Pointed
EXCELLENT
EXCELLENT
NONE
IGI LG797678190

Comments: As Grown - No indication of post-growth treatment.
This Laboratory Grown Diamond was created by High Pressure High Temperature (HPHT) growth process.
Type II