



ELECTRONIC COPY

LG797677898
Report verification at igi.org



May 22, 2026

IGI Report Number **LG797677898**

Description **LABORATORY GROWN DIAMOND**

Shape and Cutting Style **PEAR MODIFIED BRILLIANT**

Measurements **8.42 X 5.19 X 3.31 MM**

GRADING RESULTS

Carat Weight **1.04 CARAT**

Color Grade **FANCY INTENSE BLUE**

Clarity Grade **VVS 2**

May 22, 2026
IGI Report Number **LG797677898**
Description **LABORATORY GROWN DIAMOND**
Shape and Cutting Style **PEAR MODIFIED BRILLIANT**
Measurements **8.42 X 5.19 X 3.31 MM**

GRADING RESULTS

Carat Weight **1.04 CARAT**

Color Grade **FANCY INTENSE BLUE**

Clarity Grade **VVS 2**

ADDITIONAL GRADING INFORMATION

Polish **VERY GOOD**

Symmetry **VERY GOOD**

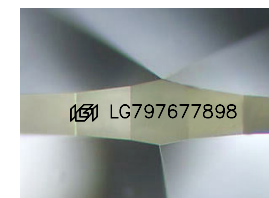
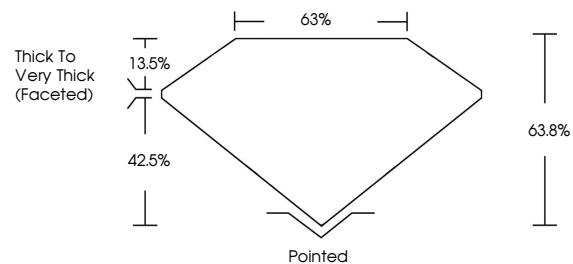
Fluorescence **NONE**

Inscription(s) **IGI LG797677898**

Comments: As Grown - No indication of post-growth treatment.

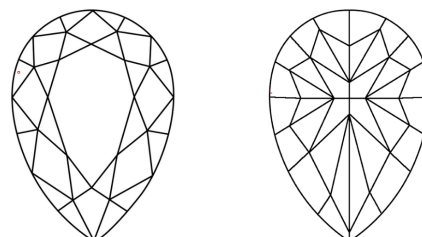
This Laboratory Grown Diamond was created by High Pressure High Temperature (HPHT) growth process.

PROPORTIONS



Sample Image Used

CLARITY CHARACTERISTICS



KEY TO SYMBOLS

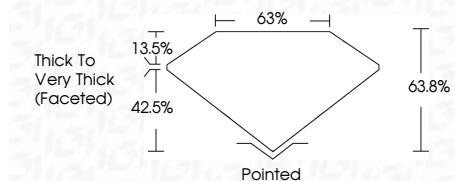
Red symbols indicate internal characteristics.
Green symbols indicate external characteristics.

COLOR

D E F G H I J Faint Very Light Light

CLARITY

FL	IF	VVS ¹⁻²	VS ¹⁻²	SI ¹⁻²	I ¹⁻³
Flawless	Internally Flawless	Very Very Slightly Included	Very Slightly Included	Slightly Included	Included



ADDITIONAL GRADING INFORMATION

Polish **VERY GOOD**

Symmetry **VERY GOOD**

Fluorescence **NONE**

Inscription(s) **IGI LG797677898**

Comments: As Grown - No indication of post-growth treatment.

This Laboratory Grown Diamond was created by High Pressure High Temperature (HPHT) growth process.



IGI



May 22, 2026
IGI Report No LG797677898
PEAR MODIFIED BRILLIANT
8.42 X 5.19 X 3.31 MM
1.04 CARAT
FANCY INTENSE BLUE
VVS 2
63.8%
42.5%
13.5%
63.8%
Pointed
Polished
VERY GOOD
VERY GOOD
NONE
IGI LG797677898

Comments: As Grown - No indication of post-growth treatment. This Laboratory Grown Diamond was created by High Pressure High Temperature (HPHT) growth process.