



ELECTRONIC COPY

LG797677656
Report verification at igi.org



May 19, 2026

IGI Report Number **LG797677656**

Description **LABORATORY GROWN DIAMOND**

Shape and Cutting Style **ROUND MODIFIED BRILLIANT**

Measurements **7.23 - 7.23 X 4.45 MM**

GRADING RESULTS

Carat Weight **1.53 CARAT**

Color Grade **FANCY INTENSE PINK**

Clarity Grade **VS 1**

May 19, 2026

IGI Report Number **LG797677656**

Description **LABORATORY GROWN DIAMOND**

Shape and Cutting Style **ROUND MODIFIED BRILLIANT**

Measurements **7.23 - 7.23 X 4.45 MM**

GRADING RESULTS

Carat Weight **1.53 CARAT**

Color Grade **FANCY INTENSE PINK**

Clarity Grade **VS 1**

ADDITIONAL GRADING INFORMATION

Polish **EXCELLENT**

Symmetry **EXCELLENT**

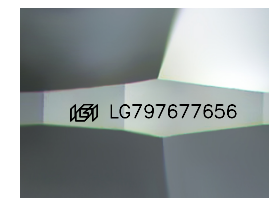
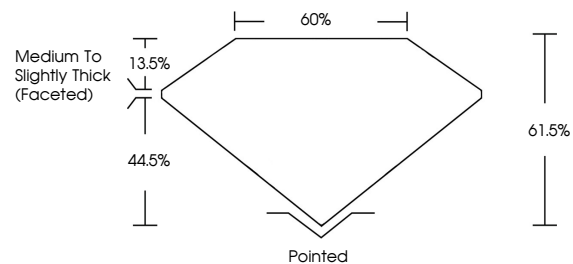
Fluorescence **SLIGHT**

Inscription(s) **IGI LG797677656**

Comments: This Laboratory Grown Diamond was created by Chemical Vapor Deposition (CVD) growth process.

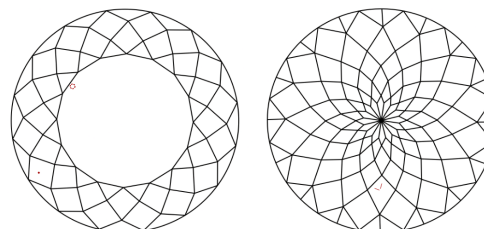
Indications of post-growth treatment.

PROPORTIONS



Sample Image Used

CLARITY CHARACTERISTICS



KEY TO SYMBOLS

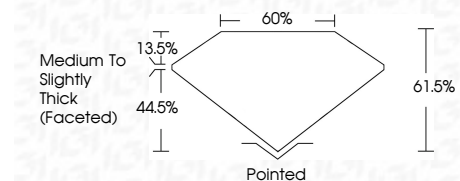
Red symbols indicate internal characteristics.
Green symbols indicate external characteristics.

COLOR

D E F G H I J Faint Very Light Light

CLARITY

FL	IF	VS ¹⁻²	VS ¹⁻²	SI ¹⁻²	I ¹⁻³
Flawless	Internally Flawless	Very Very Slightly Included	Very Slightly Included	Slightly Included	Included



ADDITIONAL GRADING INFORMATION

Polish **EXCELLENT**

Symmetry **EXCELLENT**

Fluorescence **SLIGHT**

Inscription(s) **IGI LG797677656**

Comments: This Laboratory Grown Diamond was created by Chemical Vapor Deposition (CVD) growth process. Indications of post-growth treatment.



May 19, 2026
IGI Report No LG797677656
ROUND MODIFIED BRILLIANT
7.23 - 7.23 X 4.45 MM
1.53 CARAT
FANCY INTENSE PINK
VS 1
61.05%
60%
Medium to Slightly Thick (Faceted)
Pointed
EXCELLENT
EXCELLENT
SLIGHT
IGI LG797677656
Comments: This Laboratory Grown Diamond was created by Chemical Vapor Deposition (CVD) growth process. Indications of post-growth treatment.