



ELECTRONIC COPY

LG797675378
Report verification at igi.org



May 7, 2026

IGI Report Number **LG797675378**

Description **LABORATORY GROWN DIAMOND**

Shape and Cutting Style **ROUND BRILLIANT**

Measurements **8.78 - 8.86 X 5.22 MM**

GRADING RESULTS

Carat Weight **2.52 CARATS**

Color Grade **E**

Clarity Grade **VVS 2**

Cut Grade **EXCELLENT**

May 7, 2026

IGI Report Number **LG797675378**

Description **LABORATORY GROWN DIAMOND**

Shape and Cutting Style **ROUND BRILLIANT**

Measurements **8.78 - 8.86 X 5.22 MM**

GRADING RESULTS

Carat Weight **2.52 CARATS**

Color Grade **E**

Clarity Grade **VVS 2**

Cut Grade **EXCELLENT**

ADDITIONAL GRADING INFORMATION

Polish **EXCELLENT**

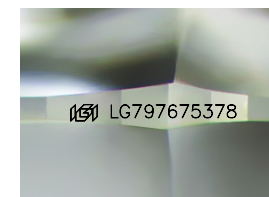
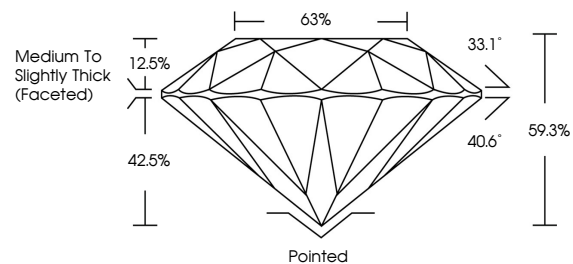
Symmetry **EXCELLENT**

Fluorescence **NONE**

Inscription(s) **IGI LG797675378**

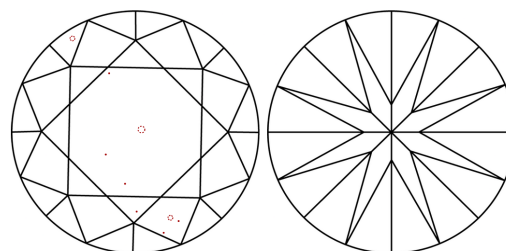
Comments: This Laboratory Grown Diamond was created by Chemical Vapor Deposition (CVD) growth process.
Type IIa

PROPORTIONS



Sample Image Used

CLARITY CHARACTERISTICS



KEY TO SYMBOLS

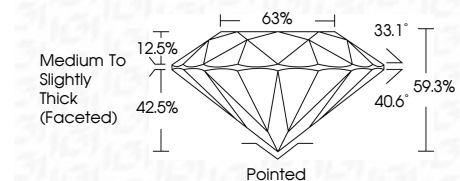
Red symbols indicate internal characteristics.
Green symbols indicate external characteristics.

COLOR

D E F G H I J Faint Very Light Light

CLARITY

FL	IF	VVS ¹⁻²	VS ¹⁻²	SI ¹⁻²	I ¹⁻³
Flawless	Internally Flawless	Very Very Slightly Included	Very Slightly Included	Slightly Included	Included



ADDITIONAL GRADING INFORMATION

Polish **EXCELLENT**

Symmetry **EXCELLENT**

Fluorescence **NONE**

Inscription(s) **IGI LG797675378**

Comments: This Laboratory Grown Diamond was created by Chemical Vapor Deposition (CVD) growth process.
Type IIa



May 7, 2026	IGI Report No LG797675378	2.52 CARATS	E	VVS 2	EXCELLENT	63%	33.1°	40.6°	42.5%	59.3%	Pointed	EXCELLENT	EXCELLENT	NONE	IGI LG797675378
ROUND BRILLIANT	8.78 - 8.86 X 5.22 MM	Color Grade	Clarity Grade	Cut Grade	Depth	Table	Graile	Medium To Slightly Thick (Faceted)	Polish	Symmetry	Fluorescence	Inscriptions(s)	Comments: This Laboratory Grown Diamond was created by Chemical Vapor Deposition (CVD) growth process. Type IIa		