



ELECTRONIC COPY

LG797675299
Report verification at igi.org

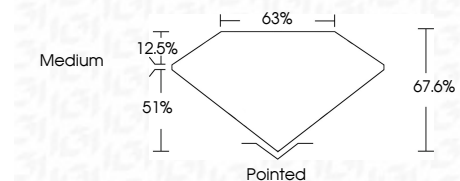


May 6, 2026
IGI Report Number LG797675299
Description LABORATORY GROWN DIAMOND
Shape and Cutting Style CUT CORNERED RECTANGULAR MODIFIED BRILLIANT

Measurements 9.12 X 6.36 X 4.30 MM

GRADING RESULTS

Carat Weight 2.10 CARATS
Color Grade E
Clarity Grade VVS 2



ADDITIONAL GRADING INFORMATION

Polish EXCELLENT
Symmetry EXCELLENT
Fluorescence NONE
Inscription(s) IGI LG797675299

Comments: This Laboratory Grown Diamond was created by Chemical Vapor Deposition (CVD) growth process. Type IIa



May 6, 2026
IGI Report No LG797675299
CUT CORNERED RECT. MODIFIED BRILLIANT
9.12 X 6.36 X 4.30 MM
2.10 CARATS
E
VVS 2
67.6%
63%
Medium
Pointed
EXCELLENT
EXCELLENT
NONE
IGI LG797675299
Comments: This Laboratory Grown Diamond was created by Chemical Vapor Deposition (CVD) growth process. Type IIa

May 6, 2026
IGI Report Number LG797675299
Description LABORATORY GROWN DIAMOND
Shape and Cutting Style CUT CORNERED RECTANGULAR MODIFIED BRILLIANT
Measurements 9.12 X 6.36 X 4.30 MM

GRADING RESULTS

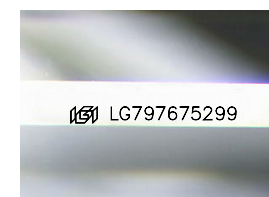
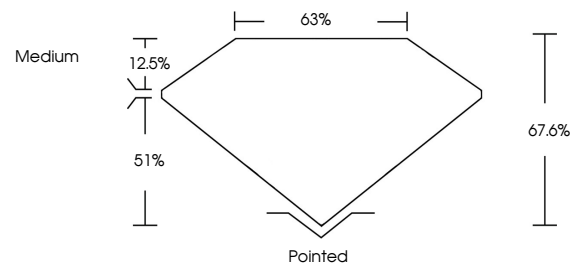
Carat Weight 2.10 CARATS
Color Grade E
Clarity Grade VVS 2

ADDITIONAL GRADING INFORMATION

Polish EXCELLENT
Symmetry EXCELLENT
Fluorescence NONE
Inscription(s) IGI LG797675299

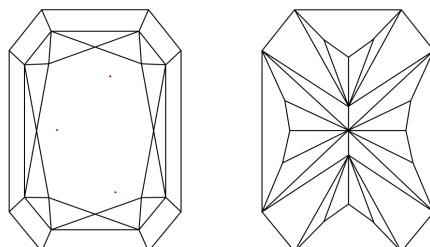
Comments: This Laboratory Grown Diamond was created by Chemical Vapor Deposition (CVD) growth process. Type IIa

PROPORTIONS



Sample Image Used

CLARITY CHARACTERISTICS



KEY TO SYMBOLS

Red symbols indicate internal characteristics.
Green symbols indicate external characteristics.

COLOR

D E F G H I J Faint Very Light Light

CLARITY

FL IF VVS 1-2 VS 1-2 SI 1-2 I 1-3
Flawless Internally Flawless Very Very Slightly Included Very Slightly Included Slightly Included Included

