



ELECTRONIC COPY

LG797674965
Report verification at igi.org



May 8, 2026
IGI Report Number **LG797674965**
Description **LABORATORY GROWN DIAMOND**
Shape and Cutting Style **CUT CORNERED
RECTANGULAR MODIFIED
BRILLIANT**
Measurements **8.07 X 5.51 X 3.77 MM**
GRADING RESULTS
Carat Weight **1.46 CARAT**
Color Grade **FANCY BROWN**
Clarity Grade **VVS 2**

May 8, 2026
IGI Report Number **LG797674965**
Description **LABORATORY GROWN DIAMOND**
Shape and Cutting Style **CUT CORNERED RECTANGULAR
MODIFIED BRILLIANT**
Measurements **8.07 X 5.51 X 3.77 MM**

GRADING RESULTS

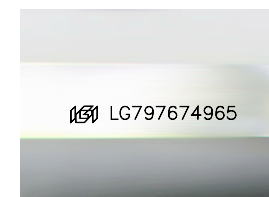
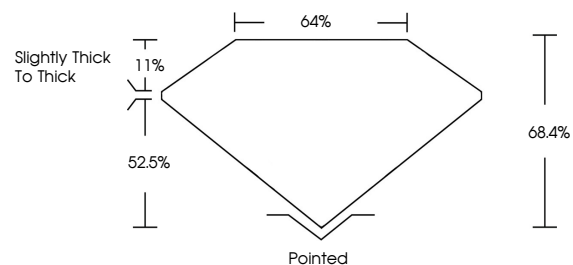
Carat Weight **1.46 CARAT**
Color Grade **FANCY BROWN**
Clarity Grade **VVS 2**

ADDITIONAL GRADING INFORMATION

Polish **EXCELLENT**
Symmetry **EXCELLENT**
Fluorescence **NONE**
Inscription(s) **IGI LG797674965**

Comments: This Laboratory Grown Diamond was created by Chemical Vapor Deposition (CVD) growth process. Indications of post-growth treatment.

PROPORTIONS



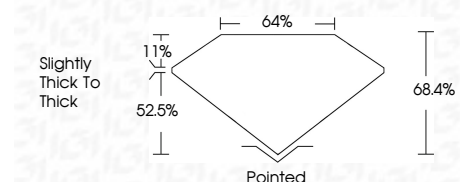
Sample Image Used

COLOR

D E F G H I J Faint Very Light Light

CLARITY

FL	IF	VVS ¹⁻²	VS ¹⁻²	SI ¹⁻²	I ¹⁻³
Flawless	Internally Flawless	Very Very Slightly Included	Very Slightly Included	Slightly Included	Included



ADDITIONAL GRADING INFORMATION

Polish **EXCELLENT**
Symmetry **EXCELLENT**
Fluorescence **NONE**
Inscription(s) **IGI LG797674965**
Comments: This Laboratory Grown Diamond was created by Chemical Vapor Deposition (CVD) growth process. Indications of post-growth treatment.



May 8, 2026
IGI Report No **LG797674965**
CUT CORNERED RECT. MODIFIED BRILLIANT
8.07 X 5.51 X 3.77 MM
Carat Weight **1.46 CARAT**
Color Grade **FANCY BROWN**
Clarity Grade **VVS 2**
Table **64%**
Depth **52.5%**
Girdle **Slightly thick to thick**
Culet **Pointed**
Polish **EXCELLENT**
Symmetry **EXCELLENT**
Fluorescence **NONE**
Inscription(s) **IGI LG797674965**

Comments: This Laboratory Grown Diamond was created by Chemical Vapor Deposition (CVD) growth process. Indications of post-growth treatment.