



LABORATORY GROWN DIAMOND REPORT

May 13, 2026
 IGI Report Number **LG797674471**
 Description **LABORATORY GROWN DIAMOND**
 Shape and Cutting Style **ROUND MODIFIED BRILLIANT**
 Measurements **5.06 - 5.08 X 3.14 MM**

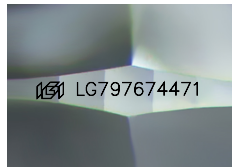
GRADING RESULTS

Carat Weight **0.55 CARAT**
 Color Grade **D**
 Clarity Grade **VVS 2**

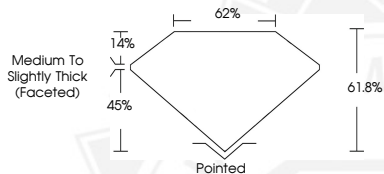
ADDITIONAL GRADING INFORMATION

Polish **VERY GOOD**
 Symmetry **EXCELLENT**
 Fluorescence **NONE**
 Inscription(s) **IGI LG797674471**

Comments: This Laboratory Grown Diamond was created by Chemical Vapor Deposition (CVD) growth process.
 Type IIa



Sample Image Used



May 13, 2026

IGI Report Number **LG797674471**
ROUND MODIFIED BRILLIANT
LABORATORY GROWN DIAMOND
5.06 - 5.08 X 3.14 MM
 Carat Weight **0.55 CARAT**
 Color Grade **D**
 Clarity Grade **VVS 2**
 Polish **VERY GOOD**
 Symmetry **EXCELLENT**
 Fluorescence **NONE**
 Inscription(s) **IGI LG797674471**

Comments: This Laboratory Grown Diamond was created by Chemical Vapor Deposition (CVD) growth process. Type IIa



May 13, 2026

IGI Report Number **LG797674471**
ROUND MODIFIED BRILLIANT
LABORATORY GROWN DIAMOND
5.06 - 5.08 X 3.14 MM
 Carat Weight **0.55 CARAT**
 Color Grade **D**
 Clarity Grade **VVS 2**
 Polish **VERY GOOD**
 Symmetry **EXCELLENT**
 Fluorescence **NONE**
 Inscription(s) **IGI LG797674471**

Comments: This Laboratory Grown Diamond was created by Chemical Vapor Deposition (CVD) growth process. Type IIa



THIS DOCUMENT WAS PRODUCED WITH THE FOLLOWING SECURITY MEASURES: SPECIAL DOCUMENT PAPER, INK SCREENS, WATERMARK, BACKGROUND DESIGNS, HOLOGRAM AND OTHER SECURITY FEATURES NOT LISTED AND DO EXCEED DOCUMENT SECURITY INDUSTRY GUIDELINES.