



ELECTRONIC COPY

LG797670227
Report verification at igi.org



May 6, 2026
IGI Report Number LG797670227
Description LABORATORY GROWN DIAMOND
Shape and Cutting Style CUSHION MODIFIED BRILLIANT
Measurements 10.11 X 7.28 X 4.85 MM
GRADING RESULTS
Carat Weight 2.87 CARATS
Color Grade F
Clarity Grade VS 1

LABORATORY GROWN DIAMOND REPORT

May 6, 2026
IGI Report Number LG797670227
Description LABORATORY GROWN DIAMOND
Shape and Cutting Style CUSHION MODIFIED BRILLIANT
Measurements 10.11 X 7.28 X 4.85 MM

GRADING RESULTS

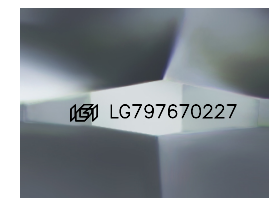
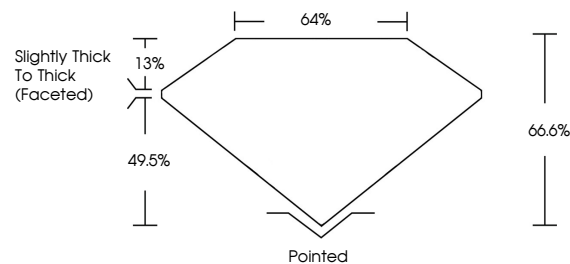
Carat Weight 2.87 CARATS
Color Grade F
Clarity Grade VS 1

ADDITIONAL GRADING INFORMATION

Polish EXCELLENT
Symmetry EXCELLENT
Fluorescence NONE
Inscription(s) IGI LG797670227

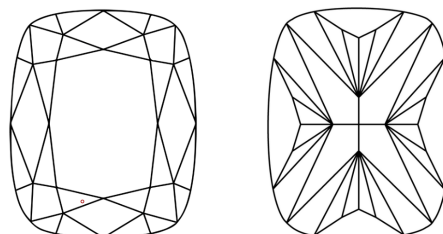
Comments: This Laboratory Grown Diamond was created by Chemical Vapor Deposition (CVD) growth process. Type IIa

PROPORTIONS



Sample Image Used

CLARITY CHARACTERISTICS



KEY TO SYMBOLS

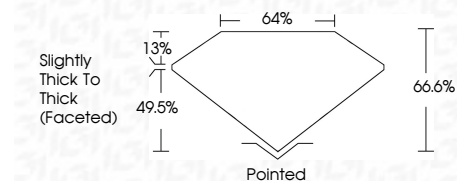
Red symbols indicate internal characteristics.
Green symbols indicate external characteristics.

COLOR

D E F G H I J Faint Very Light Light

CLARITY

FL IF VS 1-2 VS 2-3 SI 1-2 I 1-3
Flawless Internally Flawless Very Very Slightly Included Very Slightly Included Slightly Included Included



ADDITIONAL GRADING INFORMATION

Polish EXCELLENT
Symmetry EXCELLENT
Fluorescence NONE
Inscription(s) IGI LG797670227
Comments: This Laboratory Grown Diamond was created by Chemical Vapor Deposition (CVD) growth process. Type IIa



May 6, 2026
IGI Report No LG797670227
CUSHION MODIFIED BRILLIANT
10.11 X 7.28 X 4.85 MM
2.87 CARATS
F
VS 1
66.6%
49.5%
Slightly Thick To Thick (Faceted)
Pointed
EXCELLENT
EXCELLENT
NONE
IGI LG797670227
Comments: This Laboratory Grown Diamond was created by Chemical Vapor Deposition (CVD) growth process. Type IIa