



**LABORATORY GROWN DIAMOND REPORT**

May 8, 2026  
 IGI Report Number **LG797669911**  
 Description **LABORATORY GROWN DIAMOND**  
 Shape and Cutting Style **ROUND BRILLIANT**  
 Measurements **5.68 - 5.72 X 3.51 MM**

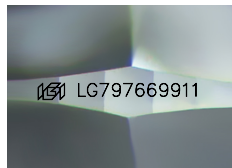
**GRADING RESULTS**

Carat Weight **0.70 CARAT**  
 Color Grade **FANCY INTENSE PINK**  
 Clarity Grade **VS 2**  
 Cut Grade **IDEAL**

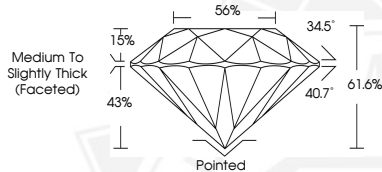
**ADDITIONAL GRADING INFORMATION**

Polish **VERY GOOD**  
 Symmetry **EXCELLENT**  
 Fluorescence **SLIGHT**  
 Inscription(s) **IGI LG797669911**

Comments: This Laboratory Grown Diamond was created by High Pressure High Temperature (HPHT) growth process. Indications of post-growth treatment.



Sample Image Used



May 8, 2026  
 IGI Report Number **LG797669911**  
 ROUND BRILLIANT  
 LABORATORY GROWN DIAMOND  
 5.68 - 5.72 X 3.51 MM  
 Carat Weight **0.70 CARAT**  
 Color Grade **FANCY INTENSE PINK**  
 Clarity Grade **VS 2**  
 Cut Grade **IDEAL**  
 Polish **VERY GOOD**  
 Symmetry **EXCELLENT**  
 Fluorescence **SLIGHT**  
 Inscription(s) **IGI LG797669911**

Comments: This Laboratory Grown Diamond was created by High Pressure High Temperature (HPHT) growth process. Indications of post-growth treatment.



May 8, 2026  
 IGI Report Number **LG797669911**  
 ROUND BRILLIANT  
 LABORATORY GROWN DIAMOND  
 5.68 - 5.72 X 3.51 MM  
 Carat Weight **0.70 CARAT**  
 Color Grade **FANCY INTENSE PINK**  
 Clarity Grade **VS 2**  
 Cut Grade **IDEAL**  
 Polish **VERY GOOD**  
 Symmetry **EXCELLENT**  
 Fluorescence **SLIGHT**  
 Inscription(s) **IGI LG797669911**

Comments: This Laboratory Grown Diamond was created by High Pressure High Temperature (HPHT) growth process. Indications of post-growth treatment.

THIS DOCUMENT WAS PRODUCED WITH THE FOLLOWING SECURITY MEASURES: SPECIAL DOCUMENT PAPER, INK SCREENS, WATERMARK, BACKGROUND DESIGNS, HOLOGRAM AND OTHER SECURITY FEATURES NOT LISTED AND DO EXCEED DOCUMENT SECURITY INDUSTRY GUIDELINES.