



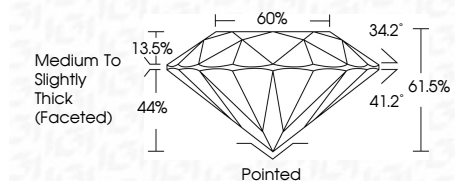
ELECTRONIC COPY

LG797659052
Report verification at igi.org



May 6, 2026
IGI Report Number LG797659052
Description LABORATORY GROWN DIAMOND
Shape and Cutting Style ROUND BRILLIANT
Measurements 6.77 - 6.80 X 4.17 MM

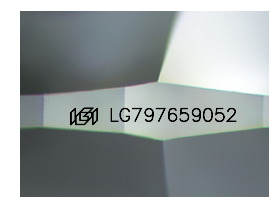
GRADING RESULTS
Carat Weight 1.18 CARAT
Color Grade D
Clarity Grade VS 1
Cut Grade IDEAL



ADDITIONAL GRADING INFORMATION
Polish VERY GOOD
Symmetry EXCELLENT
Fluorescence NONE
Inscription(s) IGI LG797659052
Comments: This Laboratory Grown Diamond was created by Chemical Vapor Deposition (CVD) growth process. Type IIa



May 6, 2026
IGI Report No LG797659052
ROUND BRILLIANT
6.77 - 6.80 X 4.17 MM
1.18 CARAT
D
VS 1
IDEAL
61.5%
66%
Medium To Slightly Thick (Faceted)
Pointed
VERY GOOD
EXCELLENT
NONE
IGI LG797659052
Comments: This Laboratory Grown Diamond was created by Chemical Vapor Deposition (CVD) growth process. Type IIa



Sample Image Used

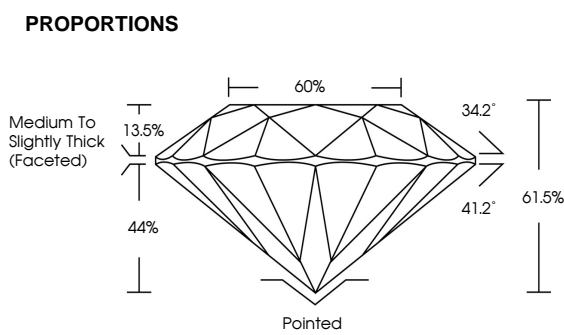


Table with 10 columns for color grades: D, E, F, G, H, I, J, Faint, Very Light, Light

Table with 6 columns for clarity grades: FL, IF, VS 1-2, VS 1-2, SI 1-2, I 1-3

