



ELECTRONIC COPY

LG797658044
Report verification at igi.org



May 8, 2026

IGI Report Number **LG797658044**

Description **LABORATORY GROWN DIAMOND**

Shape and Cutting Style **CUSHION MIXED CUT**

Measurements **7.73 X 4.84 X 2.94 MM**

GRADING RESULTS

Carat Weight **1.01 CARAT**

Color Grade **FANCY BROWN**

Clarity Grade **VS 1**

May 8, 2026

IGI Report Number **LG797658044**

Description **LABORATORY GROWN DIAMOND**

Shape and Cutting Style **CUSHION MIXED CUT**

Measurements **7.73 X 4.84 X 2.94 MM**

GRADING RESULTS

Carat Weight **1.01 CARAT**

Color Grade **FANCY BROWN**

Clarity Grade **VS 1**

ADDITIONAL GRADING INFORMATION

Polish **EXCELLENT**

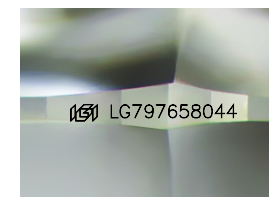
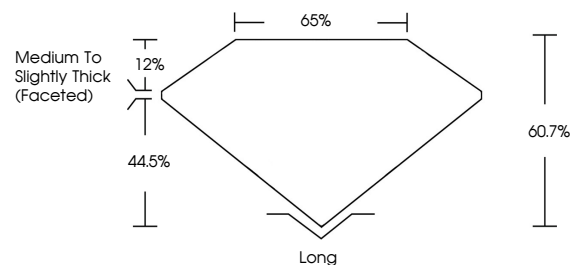
Symmetry **EXCELLENT**

Fluorescence **VERY SLIGHT**

Inscription(s) **IGI LG797658044**

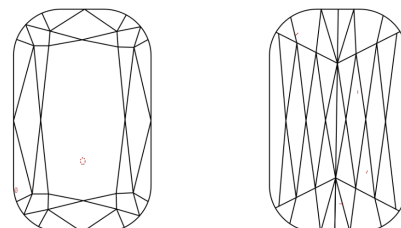
Comments: This Laboratory Grown Diamond was created by Chemical Vapor Deposition (CVD) growth process. Indications of post-growth treatment.

PROPORTIONS



Sample Image Used

CLARITY CHARACTERISTICS



KEY TO SYMBOLS

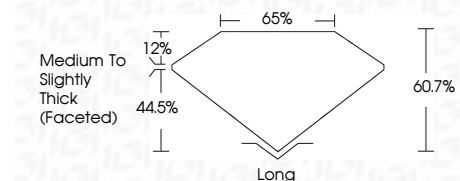
Red symbols indicate internal characteristics.
Green symbols indicate external characteristics.

COLOR

D E F G H I J Faint Very Light Light

CLARITY

FL	IF	VS ¹⁻²	VS ¹⁻²	SI ¹⁻²	I ¹⁻³
Flawless	Internally Flawless	Very Very Slightly Included	Very Slightly Included	Slightly Included	Included



ADDITIONAL GRADING INFORMATION

Polish **EXCELLENT**

Symmetry **EXCELLENT**

Fluorescence **VERY SLIGHT**

Inscription(s) **IGI LG797658044**

Comments: This Laboratory Grown Diamond was created by Chemical Vapor Deposition (CVD) growth process. Indications of post-growth treatment.



May 8, 2026
IGI Report No LG797658044
CUSHION MIXED CUT

1.01 CARAT
FANCY BROWN
VS 1
60.7%
65%

Medium to Slightly Thick (Faceted)

Long
EXCELLENT
EXCELLENT
VERY SLIGHT
IGI LG797658044

Comments: This Laboratory Grown Diamond was created by Chemical Vapor Deposition (CVD) growth process. Indications of post-growth treatment.