



ELECTRONIC COPY

LG797657880
Report verification at igi.org



May 12, 2026
IGI Report Number **LG797657880**
Description **LABORATORY GROWN DIAMOND**
Shape and Cutting Style **SQUARE CUSHION MODIFIED BRILLIANT**
Measurements **6.81 X 6.51 X 4.75 MM**
GRADING RESULTS
Carat Weight **2.02 CARATS**
Color Grade **FANCY LIGHT YELLOW**
Clarity Grade **VS 2**

LABORATORY GROWN DIAMOND REPORT

May 12, 2026
IGI Report Number **LG797657880**
Description **LABORATORY GROWN DIAMOND**
Shape and Cutting Style **SQUARE CUSHION MODIFIED BRILLIANT**
Measurements **6.81 X 6.51 X 4.75 MM**

GRADING RESULTS

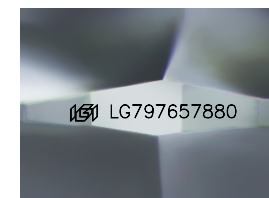
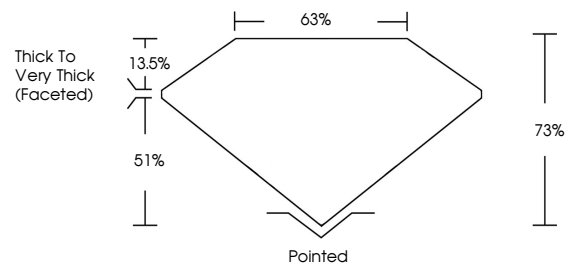
Carat Weight **2.02 CARATS**
Color Grade **FANCY LIGHT YELLOW**
Clarity Grade **VS 2**

ADDITIONAL GRADING INFORMATION

Polish **EXCELLENT**
Symmetry **EXCELLENT**
Fluorescence **NONE**
Inscription(s) **IGI LG797657880**

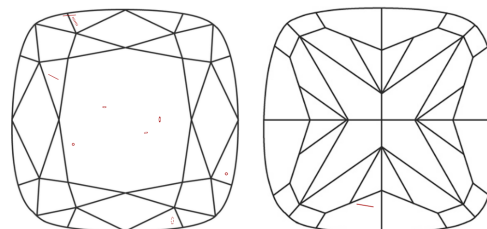
Comments: This Laboratory Grown Diamond was created by Chemical Vapor Deposition (CVD) growth process.

PROPORTIONS



Sample Image Used

CLARITY CHARACTERISTICS



KEY TO SYMBOLS

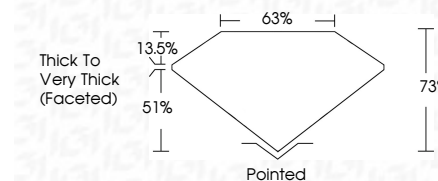
Red symbols indicate internal characteristics.
Green symbols indicate external characteristics.

COLOR

D E F G H I J Faint Very Light Light

CLARITY

FL	IF	VS ¹⁻²	VS ¹⁻²	SI ¹⁻²	I ¹⁻³
Flawless	Internally Flawless	Very Very Slightly Included	Very Slightly Included	Slightly Included	Included



ADDITIONAL GRADING INFORMATION

Polish **EXCELLENT**
Symmetry **EXCELLENT**
Fluorescence **NONE**
Inscription(s) **IGI LG797657880**
Comments: This Laboratory Grown Diamond was created by Chemical Vapor Deposition (CVD) growth process.



May 12, 2026
IGI Report No. LG797657880
SQUARE CUSHION MODIFIED BRILLIANT
6.81 X 6.51 X 4.75 MM
2.02 CARATS
FANCY LIGHT YELLOW
VS 2
70%
63%
Thick to Very Thick (Faceted)
Pointed
EXCELLENT
EXCELLENT
NONE
IGI LG797657880
Comments: This Laboratory Grown Diamond was created by Chemical Vapor Deposition (CVD) growth process.