



**ELECTRONIC COPY**

LG797656217  
Report verification at igi.org



May 6, 2026

IGI Report Number **LG797656217**

Description **LABORATORY GROWN DIAMOND**

Shape and Cutting Style **ROUND BRILLIANT**

Measurements **10.58 - 10.65 X 6.53 MM**

**GRADING RESULTS**

Carat Weight **4.55 CARATS**

Color Grade **F**

Clarity Grade **VVS 2**

Cut Grade **IDEAL**

May 6, 2026

IGI Report Number **LG797656217**

Description **LABORATORY GROWN DIAMOND**

Shape and Cutting Style **ROUND BRILLIANT**

Measurements **10.58 - 10.65 X 6.53 MM**

**GRADING RESULTS**

Carat Weight **4.55 CARATS**

Color Grade **F**

Clarity Grade **VVS 2**

Cut Grade **IDEAL**

**ADDITIONAL GRADING INFORMATION**

Polish **EXCELLENT**

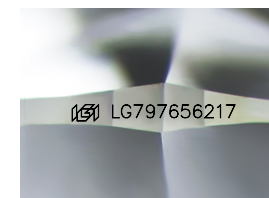
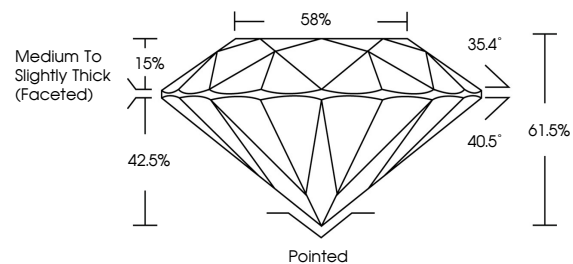
Symmetry **EXCELLENT**

Fluorescence **NONE**

Inscription(s) **IGI LG797656217**

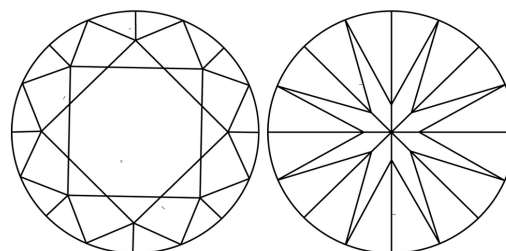
Comments: This Laboratory Grown Diamond was created by Chemical Vapor Deposition (CVD) growth process. Type IIa

**PROPORTIONS**



Sample Image Used

**CLARITY CHARACTERISTICS**



**KEY TO SYMBOLS**

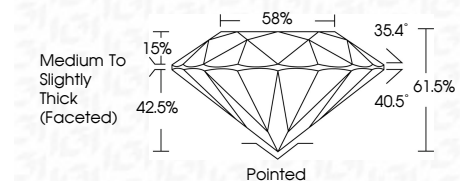
Red symbols indicate internal characteristics.  
Green symbols indicate external characteristics.

**COLOR**

D E F G H I J Faint Very Light Light

**CLARITY**

FL	IF	VVS <sup>1-2</sup>	VS <sup>1-2</sup>	SI <sup>1-2</sup>	I <sup>1-3</sup>
Flawless	Internally Flawless	Very Very Slightly Included	Very Slightly Included	Slightly Included	Included



**ADDITIONAL GRADING INFORMATION**

Polish **EXCELLENT**

Symmetry **EXCELLENT**

Fluorescence **NONE**

Inscription(s) **IGI LG797656217**

Comments: This Laboratory Grown Diamond was created by Chemical Vapor Deposition (CVD) growth process. Type IIa



**IGI**



May 6, 2026  
IGI Report No LG797656217  
**ROUND BRILLIANT**

**4.55 CARATS**  
F

**VVS 2**  
**IDEAL**  
61.5%  
58%  
Medium To Slightly Thick (Faceted)

**Pointed**  
**EXCELLENT**  
**EXCELLENT**  
**NONE**  
IGI LG797656217

**Cutler**  
**Polish**  
**Symmetry**  
**Fluorescence**  
**Inscriptions(s)**

**Comments:** This Laboratory Grown Diamond was created by Chemical Vapor Deposition (CVD) growth process. Type IIa