



**ELECTRONIC COPY**

LG797656159  
Report verification at igi.org



May 9, 2026  
IGI Report Number **LG797656159**  
Description **LABORATORY GROWN DIAMOND**  
Shape and Cutting Style **ROUND BRILLIANT**  
Measurements **10.75 - 10.78 X 6.13 MM**  
**GRADING RESULTS**  
Carat Weight **4.52 CARATS**  
Color Grade **F**  
Clarity Grade **VS 1**  
Cut Grade **VERY GOOD**

May 9, 2026  
IGI Report Number **LG797656159**  
Description **LABORATORY GROWN DIAMOND**  
Shape and Cutting Style **ROUND BRILLIANT**  
Measurements **10.75 - 10.78 X 6.13 MM**

**GRADING RESULTS**

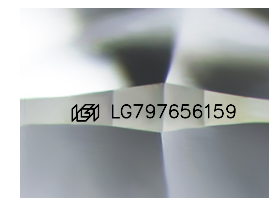
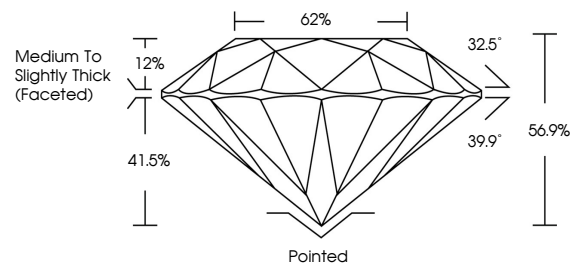
Carat Weight **4.52 CARATS**  
Color Grade **F**  
Clarity Grade **VS 1**  
Cut Grade **VERY GOOD**

**ADDITIONAL GRADING INFORMATION**

Polish **EXCELLENT**  
Symmetry **EXCELLENT**  
Fluorescence **NONE**  
Inscription(s) **IGI LG797656159**

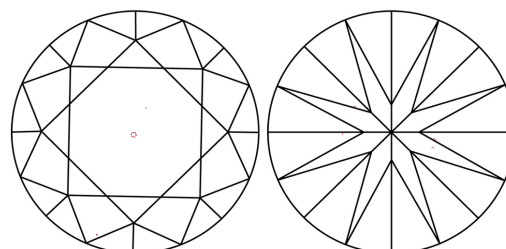
Comments: This Laboratory Grown Diamond was created by Chemical Vapor Deposition (CVD) growth process.  
Type IIa

**PROPORTIONS**



Sample Image Used

**CLARITY CHARACTERISTICS**



**KEY TO SYMBOLS**

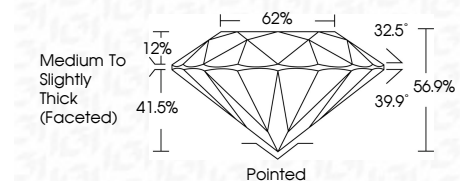
Red symbols indicate internal characteristics.  
Green symbols indicate external characteristics.

**COLOR**

D E F G H I J Faint Very Light Light

**CLARITY**

FL	IF	VS <sup>1-2</sup>	VS <sup>1-2</sup>	SI <sup>1-2</sup>	I <sup>1-3</sup>
Flawless	Internally Flawless	Very Very Slightly Included	Very Slightly Included	Slightly Included	Included



**ADDITIONAL GRADING INFORMATION**

Polish **EXCELLENT**  
Symmetry **EXCELLENT**  
Fluorescence **NONE**  
Inscription(s) **IGI LG797656159**  
Comments: This Laboratory Grown Diamond was created by Chemical Vapor Deposition (CVD) growth process.  
Type IIa



May 9, 2026  
IGI Report No. **LG797656159**  
**ROUND BRILLIANT**  
10.75 - 10.78 X 6.13 MM  
Carat Weight **4.52 CARATS**  
Color Grade **F**  
Clarity Grade **VS 1**  
Cut Grade **VERY GOOD**  
Depth **61.1%**  
Table **62%**  
Girdle **Medium To Slightly Thick (Faceted)**  
Culet **Pointed**  
Polish **EXCELLENT**  
Symmetry **EXCELLENT**  
Fluorescence **NONE**  
Inscription(s) **IGI LG797656159**  
Comments: This Laboratory Grown Diamond was created by Chemical Vapor Deposition (CVD) growth process.  
Type IIa