



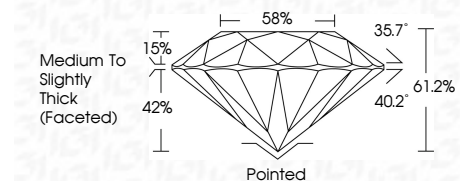
ELECTRONIC COPY

LG797656146 Report verification at igi.org



May 8, 2026 IGI Report Number LG797656146 Description LABORATORY GROWN DIAMOND Shape and Cutting Style ROUND BRILLIANT Measurements 9.70 - 9.77 X 5.96 MM

GRADING RESULTS Carat Weight 3.53 CARATS Color Grade F Clarity Grade VS 1 Cut Grade IDEAL



ADDITIONAL GRADING INFORMATION Polish EXCELLENT Symmetry EXCELLENT Fluorescence NONE Inscription(s) IGI LG797656146 Comments: This Laboratory Grown Diamond was created by Chemical Vapor Deposition (CVD) growth process. Type IIa



May 8, 2026 IGI Report No LG797656146 ROUND BRILLIANT 9.70 - 9.77 X 5.96 MM 3.53 CARATS F VS 1 IDEAL 61.2% 58% Medium To Slightly Thick (Faceted) Pointed EXCELLENT EXCELLENT NONE IGI LG797656146 Comments: This Laboratory Grown Diamond was created by Chemical Vapor Deposition (CVD) growth process. Type IIa

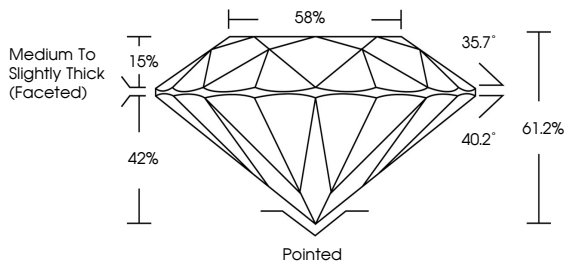
May 8, 2026 IGI Report Number LG797656146 Description LABORATORY GROWN DIAMOND Shape and Cutting Style ROUND BRILLIANT Measurements 9.70 - 9.77 X 5.96 MM

GRADING RESULTS Carat Weight 3.53 CARATS Color Grade F Clarity Grade VS 1 Cut Grade IDEAL

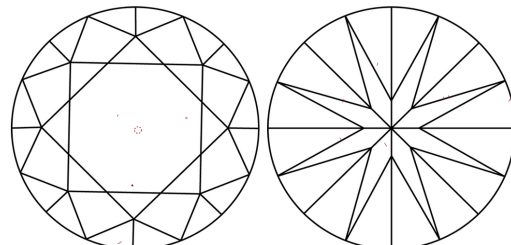
ADDITIONAL GRADING INFORMATION Polish EXCELLENT Symmetry EXCELLENT Fluorescence NONE Inscription(s) IGI LG797656146

Comments: This Laboratory Grown Diamond was created by Chemical Vapor Deposition (CVD) growth process. Type IIa

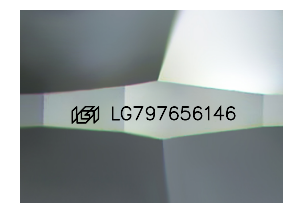
PROPORTIONS



CLARITY CHARACTERISTICS



KEY TO SYMBOLS Red symbols indicate internal characteristics. Green symbols indicate external characteristics.



Sample Image Used

Table for COLOR grading: D, E, F, G, H, I, J, Faint, Very Light, Light

Table for CLARITY grading: FL, IF, VS 1-2, VS 1-2, SI 1-2, I 1-3, Flawless, Internally Flawless, Very Very Slightly Included, Very Slightly Included, Slightly Included, Included

