



ELECTRONIC COPY

LG797655298 Report verification at igi.org



May 5, 2026 IGI Report Number LG797655298 Description LABORATORY GROWN DIAMOND Shape and Cutting Style ROUND BRILLIANT Measurements 6.57 - 6.60 X 4.02 MM GRADING RESULTS Carat Weight 1.06 CARAT Color Grade E Clarity Grade VS 1 Cut Grade IDEAL

May 5, 2026 IGI Report Number LG797655298 Description LABORATORY GROWN DIAMOND Shape and Cutting Style ROUND BRILLIANT Measurements 6.57 - 6.60 X 4.02 MM

GRADING RESULTS

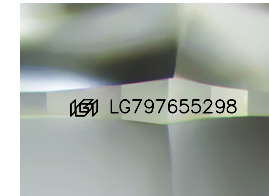
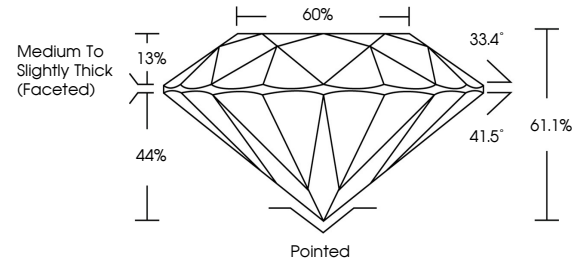
Carat Weight 1.06 CARAT Color Grade E Clarity Grade VS 1 Cut Grade IDEAL

ADDITIONAL GRADING INFORMATION

Polish EXCELLENT Symmetry EXCELLENT Fluorescence NONE Inscription(s) IGI LG797655298

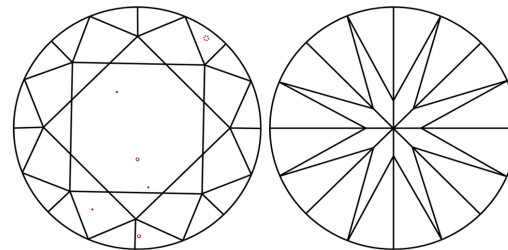
Comments: This Laboratory Grown Diamond was created by Chemical Vapor Deposition (CVD) growth process. Type IIa

PROPORTIONS



Sample Image Used

CLARITY CHARACTERISTICS



KEY TO SYMBOLS

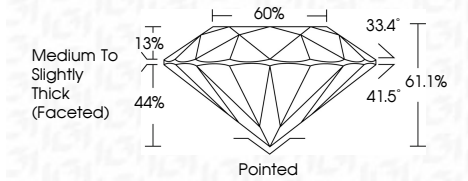
Red symbols indicate internal characteristics. Green symbols indicate external characteristics.

COLOR

D E F G H I J Faint Very Light Light

CLARITY

Table with columns: FL, IF, VS 1-2, VS 1-2, SI 1-2, I 1-3. Row: Flawless, Internally Flawless, Very Very Slightly Included, Very Slightly Included, Slightly Included, Included



ADDITIONAL GRADING INFORMATION

Polish EXCELLENT Symmetry EXCELLENT Fluorescence NONE Inscription(s) IGI LG797655298 Comments: This Laboratory Grown Diamond was created by Chemical Vapor Deposition (CVD) growth process. Type IIa



Summary of report details including date, report number, description, measurements, grading results, and additional information.