



ELECTRONIC COPY

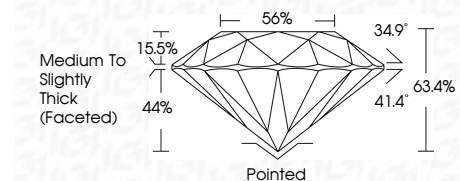
LG797653401
Report verification at igi.org



May 5, 2026
IGI Report Number LG797653401
Description LABORATORY GROWN DIAMOND
Shape and Cutting Style ROUND BRILLIANT
Measurements 6.54 - 6.61 X 4.16 MM

GRADING RESULTS

Carat Weight 1.10 CARAT
Color Grade F
Clarity Grade VVS 2
Cut Grade EXCELLENT



ADDITIONAL GRADING INFORMATION

Polish EXCELLENT
Symmetry EXCELLENT
Fluorescence NONE
Inscription(s) IGI LG797653401
Comments: This Laboratory Grown Diamond was created by Chemical Vapor Deposition (CVD) growth process. Type IIa



May 5, 2026
IGI Report No LG797653401
ROUND BRILLIANT
6.54 - 6.61 X 4.16 MM
1.10 CARAT
Color Grade F
Clarity Grade VVS 2
Cut Grade EXCELLENT
Depth 63.4%
Table 56%
Medium To Slightly Thick (Faceted)
Culet Pointed
Polish EXCELLENT
Symmetry EXCELLENT
Fluorescence NONE
Inscription(s) IGI LG797653401
Comments: This Laboratory Grown Diamond was created by Chemical Vapor Deposition (CVD) growth process. Type IIa

May 5, 2026
IGI Report Number LG797653401
Description LABORATORY GROWN DIAMOND
Shape and Cutting Style ROUND BRILLIANT
Measurements 6.54 - 6.61 X 4.16 MM

GRADING RESULTS

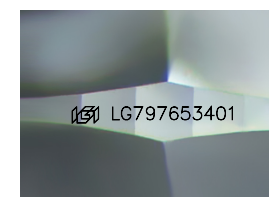
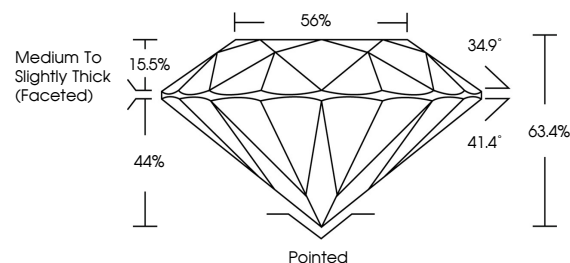
Carat Weight 1.10 CARAT
Color Grade F
Clarity Grade VVS 2
Cut Grade EXCELLENT

ADDITIONAL GRADING INFORMATION

Polish EXCELLENT
Symmetry EXCELLENT
Fluorescence NONE
Inscription(s) IGI LG797653401

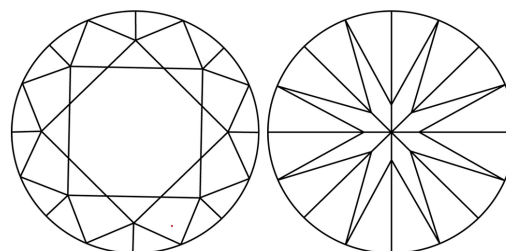
Comments: This Laboratory Grown Diamond was created by Chemical Vapor Deposition (CVD) growth process. Type IIa

PROPORTIONS



Sample Image Used

CLARITY CHARACTERISTICS



KEY TO SYMBOLS

Red symbols indicate internal characteristics.
Green symbols indicate external characteristics.

COLOR

D E F G H I J Faint Very Light Light

CLARITY

FL IF VVS 1-2 VS 1-2 SI 1-2 I 1-3
Flawless Internally Flawless Very Very Slightly Included Very Slightly Included Slightly Included Included

