



ELECTRONIC COPY

LG797650280
Report verification at igi.org



May 5, 2026

IGI Report Number **LG797650280**

Description **LABORATORY GROWN DIAMOND**

Shape and Cutting Style **OLD EUROPEAN CUT**

Measurements **7.47 - 7.53 X 4.79 MM**

GRADING RESULTS

Carat Weight **1.74 CARAT**

Color Grade **FANCY INTENSE PINK**

Clarity Grade **VVS 2**

May 5, 2026
IGI Report Number **LG797650280**
Description **LABORATORY GROWN DIAMOND**
Shape and Cutting Style **OLD EUROPEAN CUT**
Measurements **7.47 - 7.53 X 4.79 MM**

GRADING RESULTS

Carat Weight **1.74 CARAT**

Color Grade **FANCY INTENSE PINK**

Clarity Grade **VVS 2**

ADDITIONAL GRADING INFORMATION

Polish **EXCELLENT**

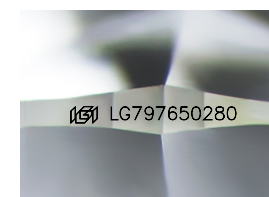
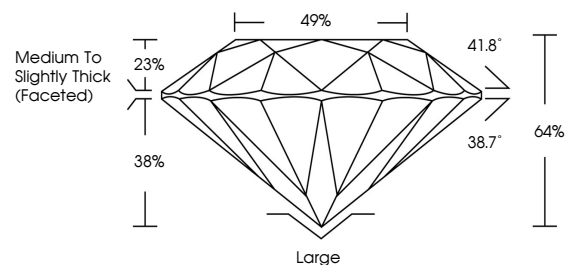
Symmetry **EXCELLENT**

Fluorescence **SLIGHT**

Inscription(s) **IGI LG797650280**

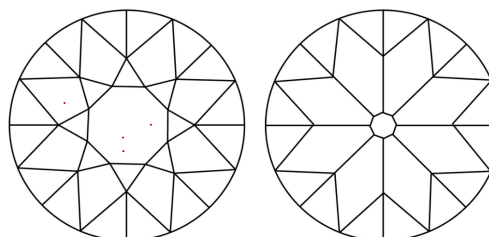
Comments: This Laboratory Grown Diamond was created by Chemical Vapor Deposition (CVD) growth process. Indications of post-growth treatment.

PROPORTIONS



Sample Image Used

CLARITY CHARACTERISTICS



KEY TO SYMBOLS

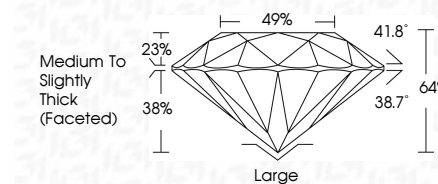
Red symbols indicate internal characteristics.
Green symbols indicate external characteristics.

COLOR

D E F G H I J Faint Very Light Light

CLARITY

FL	IF	VVS ¹⁻²	VS ¹⁻²	SI ¹⁻²	I ¹⁻³
Flawless	Internally Flawless	Very Very Slightly Included	Very Slightly Included	Slightly Included	Included



ADDITIONAL GRADING INFORMATION

Polish **EXCELLENT**

Symmetry **EXCELLENT**

Fluorescence **SLIGHT**

Inscription(s) **IGI LG797650280**

Comments: This Laboratory Grown Diamond was created by Chemical Vapor Deposition (CVD) growth process. Indications of post-growth treatment.



May 5, 2026
IGI Report No LG797650280
OLD EUROPEAN CUT
7.47 - 7.53 X 4.79 MM
1.74 CARAT
FANCY INTENSE PINK
VVS 2
Medium to Slightly Thick (Faceted)
Large
EXCELLENT
EXCELLENT
SLIGHT
IGI LG797650280

Comments: This Laboratory Grown Diamond was created by Chemical Vapor Deposition (CVD) growth process. Indications of post-growth treatment.