



ELECTRONIC COPY

LABORATORY GROWN DIAMOND REPORT

May 6, 2026  
IGI Report Number LG797650275  
Description LABORATORY GROWN DIAMOND  
Shape and Cutting Style CUT CORNERED RECTANGULAR MODIFIED BRILLIANT  
Measurements 7.12 X 5.04 X 3.66 MM

GRADING RESULTS

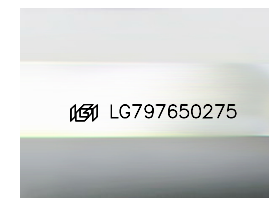
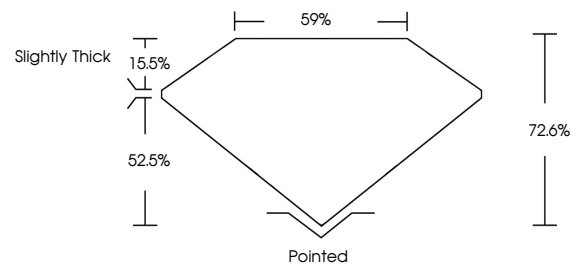
Carat Weight 1.22 CARAT  
Color Grade FANCY VIVID PINK  
Clarity Grade VS 1

ADDITIONAL GRADING INFORMATION

Polish EXCELLENT  
Symmetry FAIR  
Fluorescence SLIGHT  
Inscription(s) IGI LG797650275

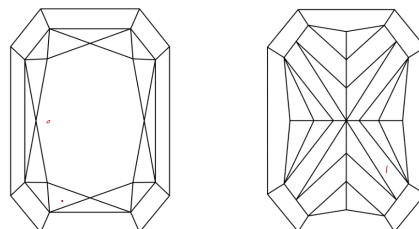
Comments: This Laboratory Grown Diamond was created by Chemical Vapor Deposition (CVD) growth process.  
Indications of post-growth treatment.

PROPORTIONS



Sample Image Used

CLARITY CHARACTERISTICS



KEY TO SYMBOLS

Red symbols indicate internal characteristics.  
Green symbols indicate external characteristics.

COLOR

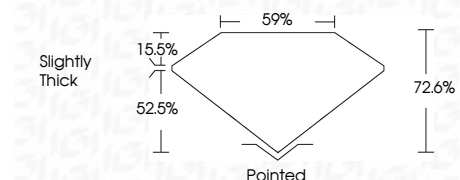
D E F G H I J Faint Very Light Light

CLARITY

FL IF VS<sup>1-2</sup> VS<sup>1-2</sup> SI<sup>1-2</sup> I<sup>1-3</sup>  
Flawless Internally Flawless Very Very Slightly Included Very Slightly Included Slightly Included Included



May 6, 2026  
IGI Report Number LG797650275  
Description LABORATORY GROWN DIAMOND  
Shape and Cutting Style CUT CORNERED RECTANGULAR MODIFIED BRILLIANT  
Measurements 7.12 X 5.04 X 3.66 MM  
GRADING RESULTS  
Carat Weight 1.22 CARAT  
Color Grade FANCY VIVID PINK  
Clarity Grade VS 1



ADDITIONAL GRADING INFORMATION

Polish EXCELLENT  
Symmetry FAIR  
Fluorescence SLIGHT  
Inscription(s) IGI LG797650275  
Comments: This Laboratory Grown Diamond was created by Chemical Vapor Deposition (CVD) growth process.  
Indications of post-growth treatment.



May 6, 2026  
IGI Report No LG797650275  
CUT CORNERED RECT. MODIFIED BRILLIANT  
7.12 X 5.04 X 3.66 MM  
1.22 CARAT  
FANCY VIVID PINK  
VS 1  
72.6%  
59%  
Slightly Thick  
Pointed  
EXCELLENT  
FAIR  
SLIGHT  
IGI LG797650275  
Comments: This Laboratory Grown Diamond was created by Chemical Vapor Deposition (CVD) growth process.  
Indications of post-growth treatment.