



**ELECTRONIC COPY**

LG797650130  
Report verification at igi.org



May 2, 2026  
IGI Report Number **LG797650130**  
Description **LABORATORY GROWN DIAMOND**  
Shape and Cutting Style **TRIANGULAR MODIFIED BRILLIANT**  
Measurements **7.65 X 7.79 X 4.18 MM**  
**GRADING RESULTS**  
Carat Weight **1.32 CARAT**  
Color Grade **F**  
Clarity Grade **VS 1**

May 2, 2026  
IGI Report Number **LG797650130**  
Description **LABORATORY GROWN DIAMOND**  
Shape and Cutting Style **TRIANGULAR MODIFIED BRILLIANT**  
Measurements **7.65 X 7.79 X 4.18 MM**

**GRADING RESULTS**

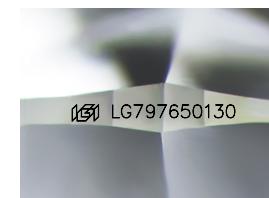
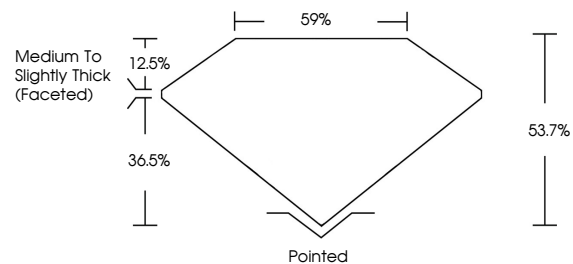
Carat Weight **1.32 CARAT**  
Color Grade **F**  
Clarity Grade **VS 1**

**ADDITIONAL GRADING INFORMATION**

Polish **EXCELLENT**  
Symmetry **EXCELLENT**  
Fluorescence **NONE**  
Inscription(s) **IGI LG797650130**

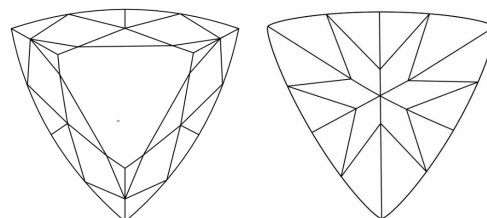
Comments: This Laboratory Grown Diamond was created by Chemical Vapor Deposition (CVD) growth process.  
Type IIa

**PROPORTIONS**



Sample Image Used

**CLARITY CHARACTERISTICS**



**KEY TO SYMBOLS**

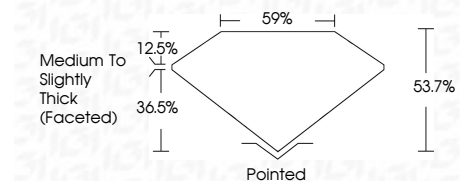
Red symbols indicate internal characteristics.  
Green symbols indicate external characteristics.

**COLOR**

D E F G H I J Faint Very Light Light

**CLARITY**

FL	IF	VS <sup>1-2</sup>	VS <sup>1-2</sup>	SI <sup>1-2</sup>	I <sup>1-3</sup>
Flawless	Internally Flawless	Very Very Slightly Included	Very Slightly Included	Slightly Included	Included



**ADDITIONAL GRADING INFORMATION**

Polish **EXCELLENT**  
Symmetry **EXCELLENT**  
Fluorescence **NONE**  
Inscription(s) **IGI LG797650130**  
Comments: This Laboratory Grown Diamond was created by Chemical Vapor Deposition (CVD) growth process.  
Type IIa



May 2, 2026  
IGI Report No. LG797650130  
**TRIANGULAR MODIFIED BRILLIANT**  
7.65 X 7.79 X 4.18 MM  
1.32 CARAT  
F  
VS 1  
63.7%  
69%  
Medium to Slightly Thick (Faceted)  
Pointed  
EXCELLENT  
EXCELLENT  
NONE  
IGI LG797650130  
Comments: This Laboratory Grown Diamond was created by Chemical Vapor Deposition (CVD) growth process.  
Type IIa