



ELECTRONIC COPY

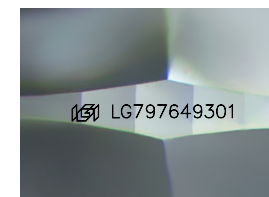
LG797649301
Report verification at igi.org



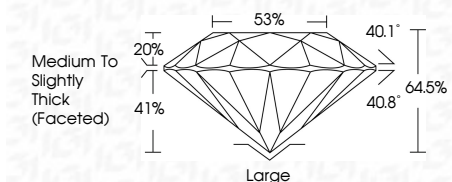
May 12, 2026
IGI Report Number **LG797649301**
Description **LABORATORY GROWN DIAMOND**
Shape and Cutting Style **OLD EUROPEAN CUT**
Measurements **6.34 - 6.39 X 4.11 MM**

GRADING RESULTS

Carat Weight **1.08 CARAT**
Color Grade **D**
Clarity Grade **VS 1**



Sample Image Used



ADDITIONAL GRADING INFORMATION

Polish **EXCELLENT**
Symmetry **EXCELLENT**
Fluorescence **NONE**
Inscription(s) **IGI LG797649301**
Comments: This Laboratory Grown Diamond was created by Chemical Vapor Deposition (CVD) growth process. Type IIa



IGI

May 12, 2026
IGI Report No LG797649301
OLD EUROPEAN CUT
6.34 - 6.39 X 4.11 MM
1.08 CARAT
D
VS 1
64.5%
41%
20%
53%
40.1°
40.8°
64.5%
Large
EXCELLENT
EXCELLENT
NONE
IGI LG797649301
Comments: This Laboratory Grown Diamond was created by Chemical Vapor Deposition (CVD) growth process. Type IIa

May 12, 2026
IGI Report Number **LG797649301**
Description **LABORATORY GROWN DIAMOND**
Shape and Cutting Style **OLD EUROPEAN CUT**
Measurements **6.34 - 6.39 X 4.11 MM**

GRADING RESULTS

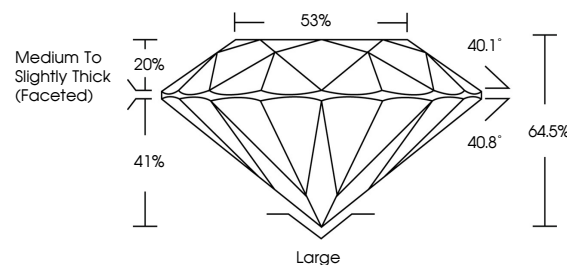
Carat Weight **1.08 CARAT**
Color Grade **D**
Clarity Grade **VS 1**

ADDITIONAL GRADING INFORMATION

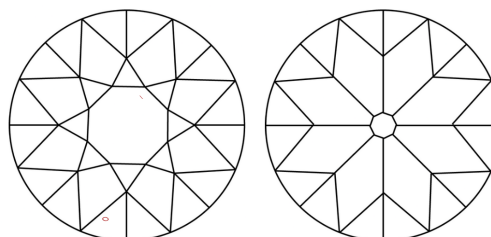
Polish **EXCELLENT**
Symmetry **EXCELLENT**
Fluorescence **NONE**
Inscription(s) **IGI LG797649301**

Comments: This Laboratory Grown Diamond was created by Chemical Vapor Deposition (CVD) growth process. Type IIa

PROPORTIONS



CLARITY CHARACTERISTICS



KEY TO SYMBOLS

Red symbols indicate internal characteristics.
Green symbols indicate external characteristics.

COLOR

D E F G H I J Faint Very Light Light

CLARITY

FL	IF	VS ¹⁻²	VS ¹⁻²	SI ¹⁻²	I ¹⁻³
Flawless	Internally Flawless	Very Very Slightly Included	Very Slightly Included	Slightly Included	Included

