



LABORATORY GROWN DIAMOND REPORT

May 1, 2026
 IGI Report Number **LG797647315**
 Description **LABORATORY GROWN DIAMOND**
 Shape and Cutting Style **OCTAGONAL STEP CUT**
 Measurements **5.86 X 5.62 X 3.78 MM**

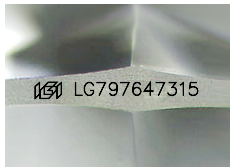
GRADING RESULTS

Carat Weight **0.96 CARAT**
 Color Grade **D**
 Clarity Grade **VS 1**

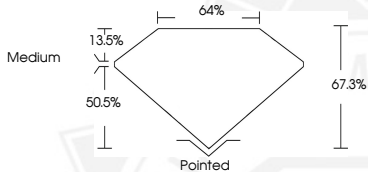
ADDITIONAL GRADING INFORMATION

Polish **EXCELLENT**
 Symmetry **EXCELLENT**
 Fluorescence **NONE**
 Inscription(s) **IGI LG797647315**

Comments: This Laboratory Grown Diamond was created by Chemical Vapor Deposition (CVD) growth process. Type IIa



Sample Image Used



May 1, 2026
 IGI Report Number **LG797647315**
 OCTAGONAL STEP CUT
 LABORATORY GROWN DIAMOND
5.86 X 5.62 X 3.78 MM
 Carat Weight **0.96 CARAT**
 Color Grade **D**
 Clarity Grade **VS 1**
 Polish **EXCELLENT**
 Symmetry **EXCELLENT**
 Fluorescence **NONE**
 Inscription(s) **IGI LG797647315**

Comments: This Laboratory Grown Diamond was created by Chemical Vapor Deposition (CVD) growth process. Type IIa



May 1, 2026
 IGI Report Number **LG797647315**
 OCTAGONAL STEP CUT
 LABORATORY GROWN DIAMOND
5.86 X 5.62 X 3.78 MM
 Carat Weight **0.96 CARAT**
 Color Grade **D**
 Clarity Grade **VS 1**
 Polish **EXCELLENT**
 Symmetry **EXCELLENT**
 Fluorescence **NONE**
 Inscription(s) **IGI LG797647315**

Comments: This Laboratory Grown Diamond was created by Chemical Vapor Deposition (CVD) growth process. Type IIa



THIS DOCUMENT WAS PRODUCED WITH THE FOLLOWING SECURITY MEASURES: SPECIAL DOCUMENT PAPER, INK SCREENS, WATERMARK, BACKGROUND DESIGNS, HOLOGRAM AND OTHER SECURITY FEATURES NOT LISTED AND DO EXCEED DOCUMENT SECURITY INDUSTRY GUIDELINES.