



ELECTRONIC COPY

LG797644065
Report verification at igi.org



May 8, 2026

IGI Report Number **LG797644065**

Description **LABORATORY GROWN DIAMOND**

Shape and Cutting Style **SQUARE EMERALD CUT**

Measurements **7.76 X 7.50 X 5.15 MM**

GRADING RESULTS

Carat Weight **2.64 CARATS**

Color Grade **FANCY VIVID BLUE**

Clarity Grade **SI 1**

May 8, 2026
IGI Report Number **LG797644065**
Description **LABORATORY GROWN DIAMOND**
Shape and Cutting Style **SQUARE EMERALD CUT**
Measurements **7.76 X 7.50 X 5.15 MM**

GRADING RESULTS

Carat Weight **2.64 CARATS**

Color Grade **FANCY VIVID BLUE**

Clarity Grade **SI 1**

ADDITIONAL GRADING INFORMATION

Polish **EXCELLENT**

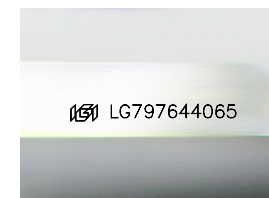
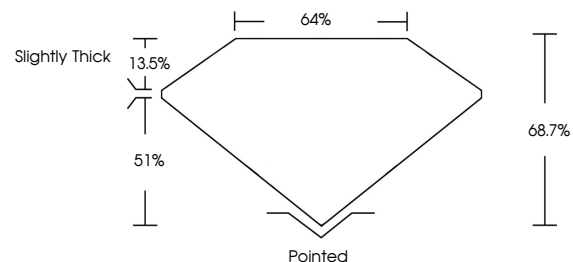
Symmetry **EXCELLENT**

Fluorescence **NONE**

Inscription(s) **IGI LG797644065**

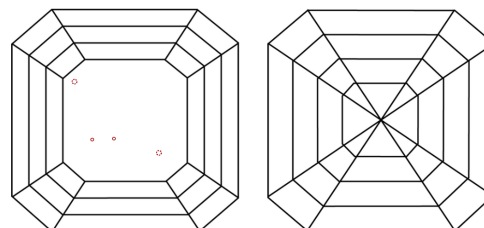
Comments: This Laboratory Grown Diamond was created by Chemical Vapor Deposition (CVD) growth process.
Indications of post-growth treatment.

PROPORTIONS



Sample Image Used

CLARITY CHARACTERISTICS



KEY TO SYMBOLS

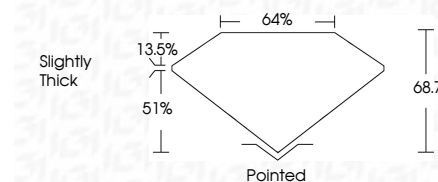
Red symbols indicate internal characteristics.
Green symbols indicate external characteristics.

COLOR

D E F G H I J Faint Very Light Light

CLARITY

FL	IF	VS ¹⁻²	VS ¹⁻²	SI ¹⁻²	I ¹⁻³
Flawless	Internally Flawless	Very Very Slightly Included	Very Slightly Included	Slightly Included	Included



ADDITIONAL GRADING INFORMATION

Polish **EXCELLENT**

Symmetry **EXCELLENT**

Fluorescence **NONE**

Inscription(s) **IGI LG797644065**

Comments: This Laboratory Grown Diamond was created by Chemical Vapor Deposition (CVD) growth process.
Indications of post-growth treatment.



May 8, 2026
IGI Report No **LG797644065**
SQUARE EMERALD CUT

2.64 CARATS
Carat Weight

FANCY VIVID BLUE
Color Grade

SI 1
Clarity Grade

68.7%
Table

64%
Girdle

Slightly Thick
Culet

Pointed
Polish

EXCELLENT
Symmetry

EXCELLENT
Fluorescence

NONE
Inscription(s)

IGI LG797644065

Comments: This Laboratory Grown Diamond was created by Chemical Vapor Deposition (CVD) growth process.
Indications of post-growth treatment.