



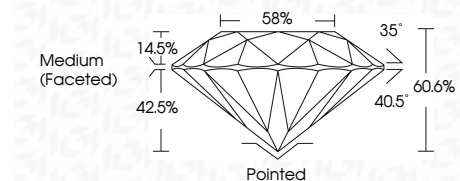
ELECTRONIC COPY

LG797642338 Report verification at igi.org



May 8, 2026 IGI Report Number LG797642338 Description LABORATORY GROWN DIAMOND Shape and Cutting Style ROUND BRILLIANT Measurements 6.91 - 6.93 X 4.19 MM

GRADING RESULTS Carat Weight 1.24 CARAT Color Grade D Clarity Grade VVS 1 Cut Grade IDEAL



ADDITIONAL GRADING INFORMATION Polish EXCELLENT Symmetry EXCELLENT Fluorescence NONE Inscription(s) LG797642338 Comments: HEARTS & ARROWS As Grown - No indication of post-growth treatment. This Laboratory Grown Diamond was created by High Pressure High Temperature (HPHT) growth process. Type II



May 8, 2026 IGI Report No LG797642338 ROUND BRILLIANT 6.91 - 6.93 X 4.19 MM 1.24 CARAT D VVS 1 IDEAL 60.6% 58% Medium (Faceted) Pointed EXCELLENT EXCELLENT NONE LG797642338

Comments: HEARTS & ARROWS As Grown - No indication of post-growth treatment. This Laboratory Grown Diamond was created by High Pressure High Temperature (HPHT) growth process. Type II

LABORATORY GROWN DIAMOND REPORT

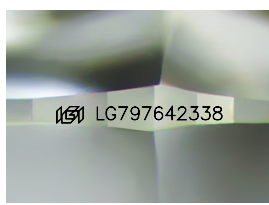
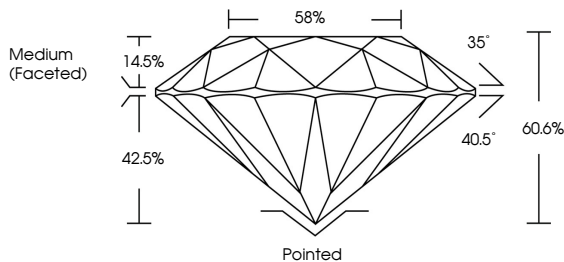
May 8, 2026 IGI Report Number LG797642338 Description LABORATORY GROWN DIAMOND Shape and Cutting Style ROUND BRILLIANT Measurements 6.91 - 6.93 X 4.19 MM

GRADING RESULTS Carat Weight 1.24 CARAT Color Grade D Clarity Grade VVS 1 Cut Grade IDEAL

ADDITIONAL GRADING INFORMATION Polish EXCELLENT Symmetry EXCELLENT Fluorescence NONE Inscription(s) LG797642338

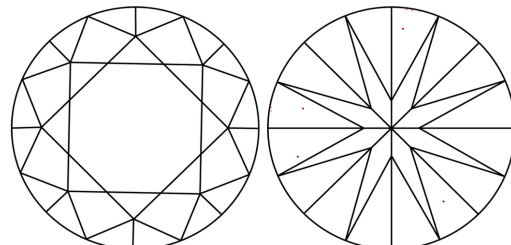
Comments: HEARTS & ARROWS As Grown - No indication of post-growth treatment. This Laboratory Grown Diamond was created by High Pressure High Temperature (HPHT) growth process. Type II

PROPORTIONS



Sample Image Used

CLARITY CHARACTERISTICS



KEY TO SYMBOLS Red symbols indicate internal characteristics. Green symbols indicate external characteristics.

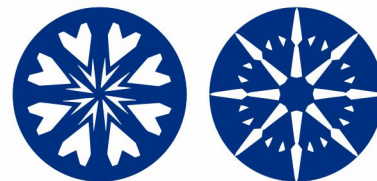


Table with columns for Color grades: D, E, F, G, H, I, J, Faint, Very Light, Light

Table with columns for Clarity grades: FL, IF, VVS 1-2, VS 1-2, SI 1-2, I 1-3

