



ELECTRONIC COPY

LG797640461
Report verification at igi.org



May 4, 2026

IGI Report Number **LG797640461**

Description **LABORATORY GROWN DIAMOND**

Shape and Cutting Style **PEAR BRILLIANT**

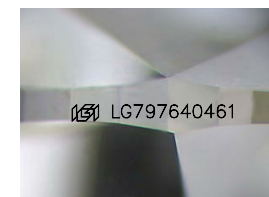
Measurements **8.88 X 5.71 X 3.62 MM**

GRADING RESULTS

Carat Weight **1.09 CARAT**

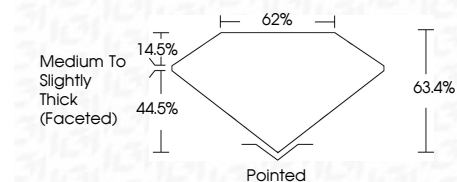
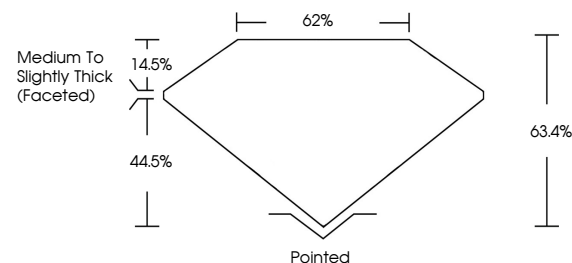
Color Grade **E**

Clarity Grade **VVS 2**

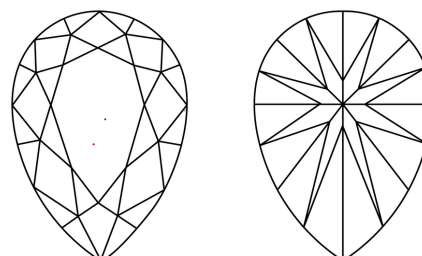


Sample Image Used

PROPORTIONS



CLARITY CHARACTERISTICS



KEY TO SYMBOLS

Red symbols indicate internal characteristics.
Green symbols indicate external characteristics.

COLOR

D E F G H I J Faint Very Light Light

CLARITY

FL	IF	VVS ¹⁻²	VS ¹⁻²	SI ¹⁻²	I ¹⁻³
Flawless	Internally Flawless	Very Very Slightly Included	Very Slightly Included	Slightly Included	Included

ADDITIONAL GRADING INFORMATION

Polish **EXCELLENT**

Symmetry **EXCELLENT**

Fluorescence **NONE**

Inscription(s) **IGI LG797640461**

Comments: This Laboratory Grown Diamond was created by Chemical Vapor Deposition (CVD) growth process. Type IIa



IGI



May 4, 2026	1.09 CARAT	E	VVS 2	63.4%	62%	Pointed	EXCELLENT	EXCELLENT	NONE	IGI LG797640461
IGI Report No LG797640461	8.88 X 5.71 X 3.62 MM	PEAR BRILLIANT	Medium to Slightly Thick (Faceted)	Depth	Table	Girdle	Culet	Polish	Symmetry	Fluorescence

Comments: This Laboratory Grown Diamond was created by Chemical Vapor Deposition (CVD) growth process. Type IIa