



ELECTRONIC COPY

LG797639317
Report verification at igi.org



May 15, 2026

IGI Report Number **LG797639317**

Description **LABORATORY GROWN DIAMOND**

Shape and Cutting Style **CUT CORNERED
RECTANGULAR MODIFIED
BRILLIANT**

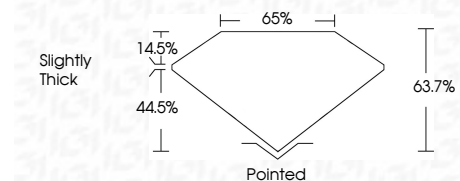
Measurements **12.99 X 9.01 X 5.74 MM**

GRADING RESULTS

Carat Weight **6.02 CARATS**

Color Grade **F**

Clarity Grade **VVS 2**



ADDITIONAL GRADING INFORMATION

Polish **EXCELLENT**

Symmetry **EXCELLENT**

Fluorescence **NONE**

Inscription(s) **IGI LG797639317**

Comments: This Laboratory Grown Diamond was created by Chemical Vapor Deposition (CVD) growth process. Type IIa



| | | | | | | | | | | | | | | |
|--------------|---------------------------|---------------------------------------|------------------------|--------------|-------------|---------------|-------|--------|----------------|---------|-----------|--------------|----------------|---|
| May 15, 2026 | IGI Report No LG797639317 | CUT CORNERED RECT. MODIFIED BRILLIANT | 12.99 X 9.01 X 5.74 MM | 6.02 CARATS | F | VVS 2 | 63.7% | 65% | Slightly Thick | Pointed | EXCELLENT | EXCELLENT | NONE | IGI LG797639317 |
| Polish | Symmetry | Fluorescence | Inscription(s) | Carat Weight | Color Grade | Clarity Grade | Table | Girdle | Culet | Polish | Symmetry | Fluorescence | Inscription(s) | Comments: This Laboratory Grown Diamond was created by Chemical Vapor Deposition (CVD) growth process. Type IIa |

LABORATORY GROWN DIAMOND REPORT

May 15, 2026

IGI Report Number **LG797639317**

Description **LABORATORY GROWN DIAMOND**

Shape and Cutting Style **CUT CORNERED RECTANGULAR
MODIFIED BRILLIANT**

Measurements **12.99 X 9.01 X 5.74 MM**

GRADING RESULTS

Carat Weight **6.02 CARATS**

Color Grade **F**

Clarity Grade **VVS 2**

ADDITIONAL GRADING INFORMATION

Polish **EXCELLENT**

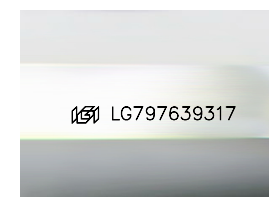
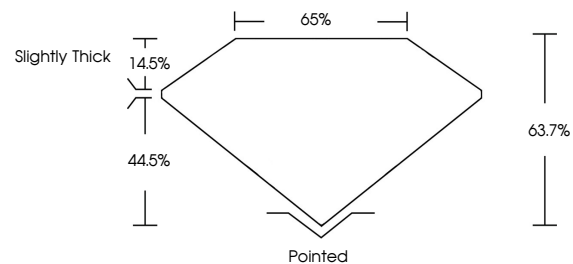
Symmetry **EXCELLENT**

Fluorescence **NONE**

Inscription(s) **IGI LG797639317**

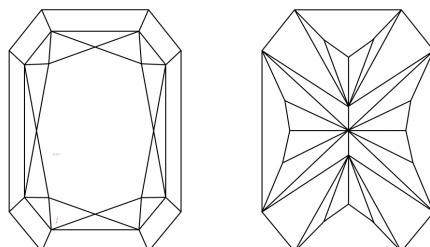
Comments: This Laboratory Grown Diamond was created by Chemical Vapor Deposition (CVD) growth process. Type IIa

PROPORTIONS



Sample Image Used

CLARITY CHARACTERISTICS



KEY TO SYMBOLS

Red symbols indicate internal characteristics.
Green symbols indicate external characteristics.

COLOR

D E F G H I J Faint Very Light Light

CLARITY

| | | | | | |
|----------|---------------------|-----------------------------|------------------------|-------------------|------------------|
| FL | IF | VVS ¹⁻² | VS ¹⁻² | SI ¹⁻² | I ¹⁻³ |
| Flawless | Internally Flawless | Very Very Slightly Included | Very Slightly Included | Slightly Included | Included |

