



May 12, 2026

IGI Report Number LG797639180
OVAL MODIFIED BRILLIANT
LABORATORY GROWN DIAMOND
6.42 X 4.70 X 2.77 MM

Carat Weight 0.63 CARAT
Color Grade FANCY INTENSE
YELLOW

Clarity Grade VS 2
Polish VERY GOOD
Symmetry VERY GOOD
Fluorescence NONE
Inscription(s) IGI LG797639180

Comments: This Laboratory Grown Diamond was created by Chemical Vapor Deposition (CVD) growth process.

LABORATORY GROWN DIAMOND REPORT

May 12, 2026
IGI Report Number **LG797639180**
Description **LABORATORY GROWN DIAMOND**
Shape and Cutting Style **OVAL MODIFIED BRILLIANT**
Measurements **6.42 X 4.70 X 2.77 MM**

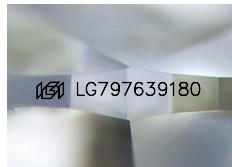
GRADING RESULTS

Carat Weight 0.63 CARAT
Color Grade FANCY INTENSE YELLOW
Clarity Grade VS 2

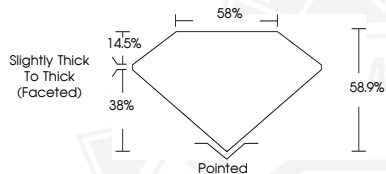
ADDITIONAL GRADING INFORMATION

Polish VERY GOOD
Symmetry VERY GOOD
Fluorescence NONE
Inscription(s) IGI LG797639180

Comments: This Laboratory Grown Diamond was created by Chemical Vapor Deposition (CVD) growth process.



Sample Image Used



May 12, 2026

IGI Report Number LG797639180
OVAL MODIFIED BRILLIANT
LABORATORY GROWN DIAMOND
6.42 X 4.70 X 2.77 MM

Carat Weight 0.63 CARAT
Color Grade FANCY INTENSE
YELLOW

Clarity Grade VS 2
Polish VERY GOOD
Symmetry VERY GOOD
Fluorescence NONE
Inscription(s) IGI LG797639180

Comments: This Laboratory Grown Diamond was created by Chemical Vapor Deposition (CVD) growth process.



THIS DOCUMENT WAS PRODUCED WITH THE FOLLOWING SECURITY MEASURES: SPECIAL DOCUMENT PAPER, INK SCREENS, WATERMARK, BACKGROUND DESIGNS, HOLOGRAM AND OTHER SECURITY FEATURES NOT LISTED AND DO EXCEED DOCUMENT SECURITY INDUSTRY GUIDELINES.