



ELECTRONIC COPY

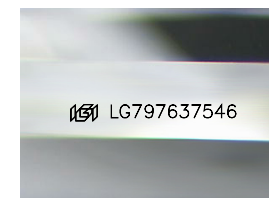
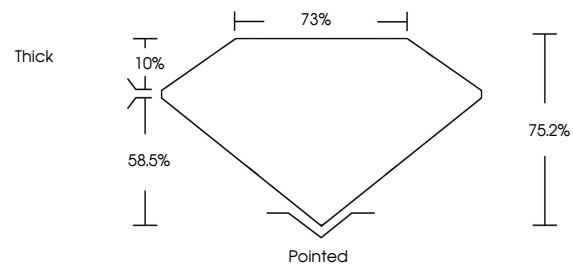
LG797637546
Report verification at igi.org



May 7, 2026
IGI Report Number **LG797637546**
Description **LABORATORY GROWN DIAMOND**
Shape and Cutting Style **PRINCESS CUT**
Measurements **5.43 X 5.21 X 3.92 MM**
GRADING RESULTS
Carat Weight **1.01 CARAT**
Color Grade **FANCY INTENSE PINK**
Clarity Grade **VS 1**

May 7, 2026
IGI Report Number **LG797637546**
Description **LABORATORY GROWN DIAMOND**
Shape and Cutting Style **PRINCESS CUT**
Measurements **5.43 X 5.21 X 3.92 MM**

PROPORTIONS

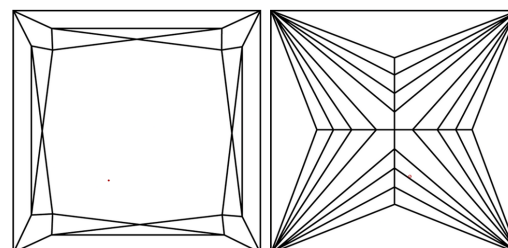


Sample Image Used

GRADING RESULTS

Carat Weight **1.01 CARAT**
Color Grade **FANCY INTENSE PINK**
Clarity Grade **VS 1**

CLARITY CHARACTERISTICS



KEY TO SYMBOLS

Red symbols indicate internal characteristics.
Green symbols indicate external characteristics.

ADDITIONAL GRADING INFORMATION

Polish **VERY GOOD**
Symmetry **VERY GOOD**
Fluorescence **SLIGHT**
Inscription(s) **IGI LG797637546**

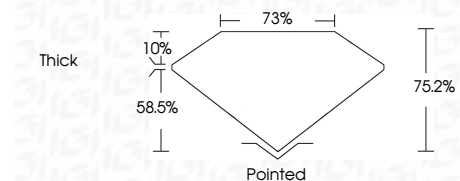
Comments: This Laboratory Grown Diamond was created by Chemical Vapor Deposition (CVD) growth process.
Indications of post-growth treatment.

COLOR

D E F G H I J Faint Very Light Light

CLARITY

FL	IF	VS ¹⁻²	VS ¹⁻²	SI ¹⁻²	I ¹⁻³
Flawless	Internally Flawless	Very Very Slightly Included	Very Slightly Included	Slightly Included	Included



ADDITIONAL GRADING INFORMATION

Polish **VERY GOOD**
Symmetry **VERY GOOD**
Fluorescence **SLIGHT**
Inscription(s) **IGI LG797637546**
Comments: This Laboratory Grown Diamond was created by Chemical Vapor Deposition (CVD) growth process.
Indications of post-growth treatment.



May 7, 2026
IGI Report No **LG797637546**
PRINCESS CUT
1.01 CARAT
Carat Weight **FANCY INTENSE PINK**
Color Grade **VS 1**
Depth **75.2%**
Table **75%**
Girdle **Thick**
Culet **Pointed**
Polish **VERY GOOD**
Symmetry **VERY GOOD**
Fluorescence **SLIGHT**
Inscription(s) **IGI LG797637546**
Comments: This Laboratory Grown Diamond was created by Chemical Vapor Deposition (CVD) growth process.
Indications of post-growth treatment.