



**ELECTRONIC COPY**

LG797637526  
Report verification at igi.org



May 6, 2026  
IGI Report Number **LG797637526**  
Description **LABORATORY GROWN DIAMOND**  
Shape and Cutting Style **PRINCESS CUT**  
Measurements **9.48 X 9.36 X 6.73 MM**  
**GRADING RESULTS**  
Carat Weight **5.50 CARATS**  
Color Grade **FANCY VIVID YELLOW**  
Clarity Grade **VS 1**

May 6, 2026  
IGI Report Number **LG797637526**  
Description **LABORATORY GROWN DIAMOND**  
Shape and Cutting Style **PRINCESS CUT**  
Measurements **9.48 X 9.36 X 6.73 MM**

**GRADING RESULTS**

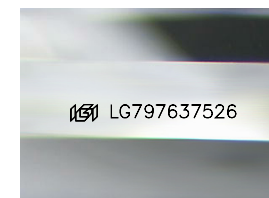
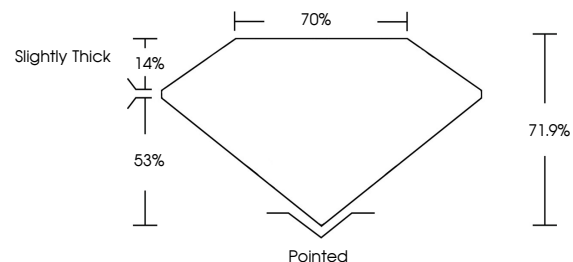
Carat Weight **5.50 CARATS**  
Color Grade **FANCY VIVID YELLOW**  
Clarity Grade **VS 1**

**ADDITIONAL GRADING INFORMATION**

Polish **EXCELLENT**  
Symmetry **EXCELLENT**  
Fluorescence **NONE**  
Inscription(s) **IGI LG797637526**

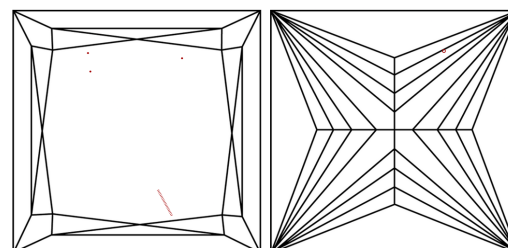
Comments: This Laboratory Grown Diamond was created by Chemical Vapor Deposition (CVD) growth process.

**PROPORTIONS**



Sample Image Used

**CLARITY CHARACTERISTICS**



**KEY TO SYMBOLS**

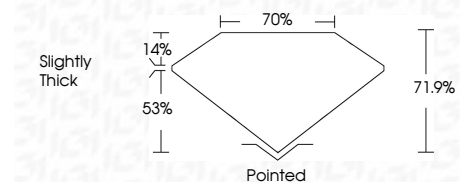
Red symbols indicate internal characteristics.  
Green symbols indicate external characteristics.

**COLOR**

D E F G H I J Faint Very Light Light

**CLARITY**

FL	IF	VS <sup>1-2</sup>	VS <sup>1-2</sup>	SI <sup>1-2</sup>	I <sup>1-3</sup>
Flawless	Internally Flawless	Very Very Slightly Included	Very Slightly Included	Slightly Included	Included



**ADDITIONAL GRADING INFORMATION**

Polish **EXCELLENT**  
Symmetry **EXCELLENT**  
Fluorescence **NONE**  
Inscription(s) **IGI LG797637526**  
Comments: This Laboratory Grown Diamond was created by Chemical Vapor Deposition (CVD) growth process.



**IGI**



May 6, 2026  
IGI Report No **LG797637526**  
**PRINCESS CUT**  
**5.50 CARATS**  
Carat Weight **FANCY VIVID YELLOW**  
Color Grade **VS 1**  
Depth **71.9%**  
Table **70%**  
Girdle **Slightly Thick**  
Culet **Pointed**  
Polish **EXCELLENT**  
Symmetry **EXCELLENT**  
Fluorescence **NONE**  
Inscription(s) **IGI LG797637526**  
Comments: This Laboratory Grown Diamond was created by Chemical Vapor Deposition (CVD) growth process.