



**ELECTRONIC COPY**

LG797637491  
Report verification at igi.org



May 6, 2026

IGI Report Number **LG797637491**

Description **LABORATORY GROWN DIAMOND**

Shape and Cutting Style **HEART BRILLIANT**

Measurements **7.77 X 8.91 X 5.10 MM**

**GRADING RESULTS**

Carat Weight **2.10 CARATS**

Color Grade **FANCY PINK**

Clarity Grade **VS 2**

May 6, 2026  
IGI Report Number **LG797637491**  
Description **LABORATORY GROWN DIAMOND**  
Shape and Cutting Style **HEART BRILLIANT**  
Measurements **7.77 X 8.91 X 5.10 MM**

**GRADING RESULTS**

Carat Weight **2.10 CARATS**

Color Grade **FANCY PINK**

Clarity Grade **VS 2**

**ADDITIONAL GRADING INFORMATION**

Polish **EXCELLENT**

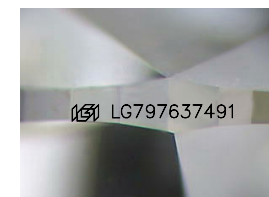
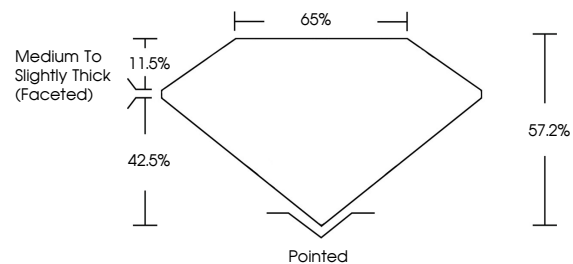
Symmetry **EXCELLENT**

Fluorescence **SLIGHT**

Inscription(s) **IGI LG797637491**

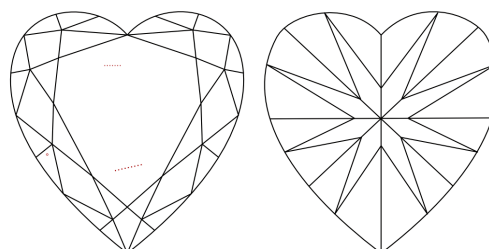
Comments: This Laboratory Grown Diamond was created by Chemical Vapor Deposition (CVD) growth process.  
Indications of post-growth treatment.

**PROPORTIONS**



Sample Image Used

**CLARITY CHARACTERISTICS**



**KEY TO SYMBOLS**

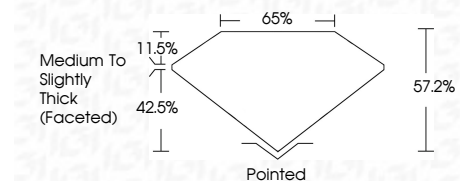
Red symbols indicate internal characteristics.  
Green symbols indicate external characteristics.

**COLOR**

D E F G H I J Faint Very Light Light

**CLARITY**

FL	IF	VS <sup>1-2</sup>	VS <sup>1-2</sup>	SI <sup>1-2</sup>	I <sup>1-3</sup>
Flawless	Internally Flawless	Very Very Slightly Included	Very Slightly Included	Slightly Included	Included



**ADDITIONAL GRADING INFORMATION**

Polish **EXCELLENT**

Symmetry **EXCELLENT**

Fluorescence **SLIGHT**

Inscription(s) **IGI LG797637491**

Comments: This Laboratory Grown Diamond was created by Chemical Vapor Deposition (CVD) growth process.  
Indications of post-growth treatment.



May 6, 2026  
IGI Report No LG797637491  
**HEART BRILLIANT**  
2.10 CARATS  
FANCY PINK  
VS 2  
7.77 X 8.91 X 5.10 MM  
Color Grade  
FANCY PINK  
Clarity Grade  
VS 2  
Depth  
57.2%  
Table  
65%  
Girdle  
Medium to Slightly Thick (Faceted)  
Culet  
Pointed  
Polish  
EXCELLENT  
Symmetry  
EXCELLENT  
Fluorescence  
SLIGHT  
Inscription(s)  
IGI LG797637491  
Comments: This Laboratory Grown Diamond was created by Chemical Vapor Deposition (CVD) growth process.  
Indications of post-growth treatment.